

# HARDEBERGA HOUSE

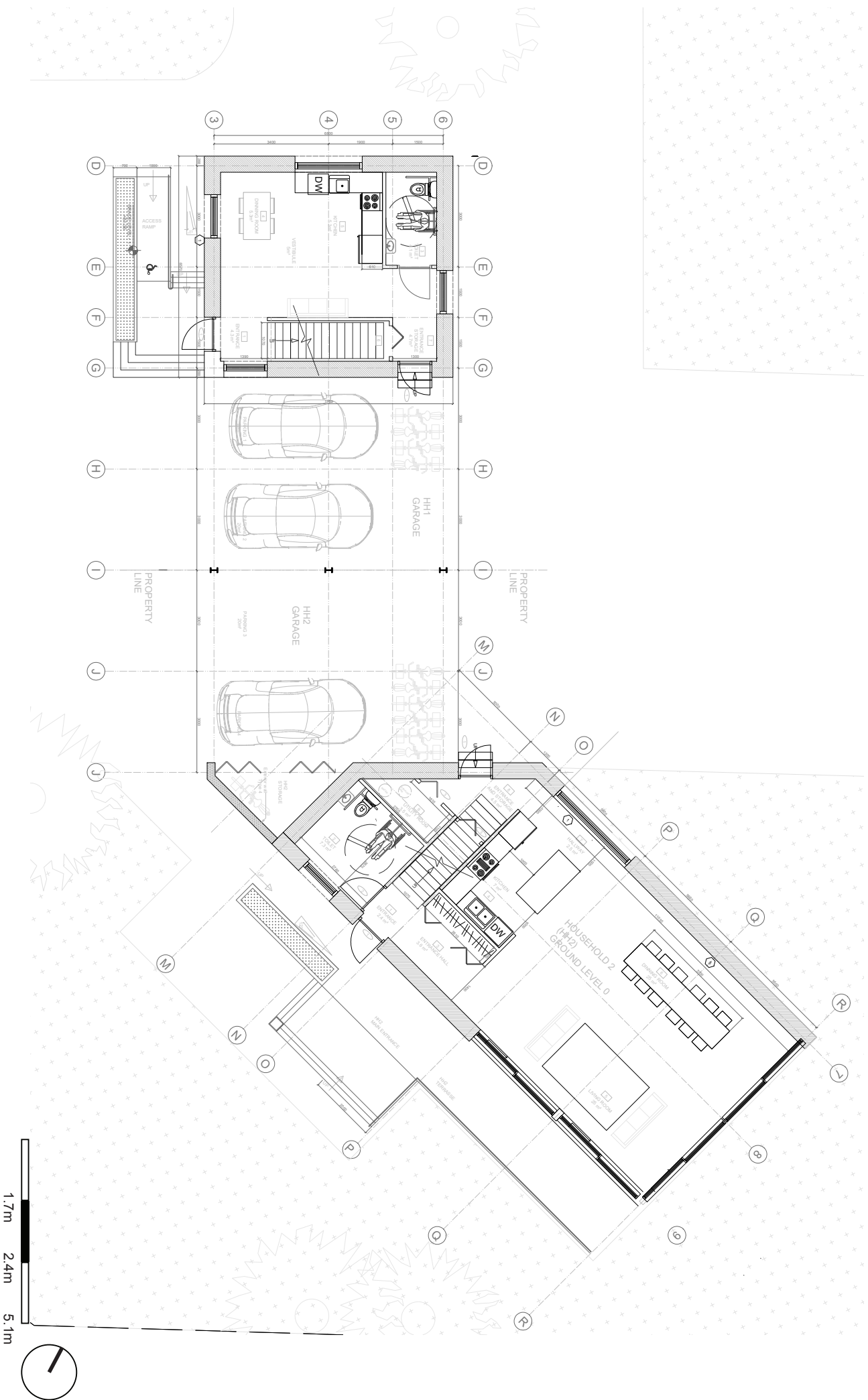
HARDEBERGA  
HOUSE  
LUND SWEDEN  
30-10-2016

JUST OPEN ARCHITECTURE  
 JUST OPEN

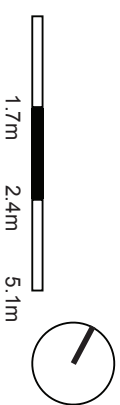
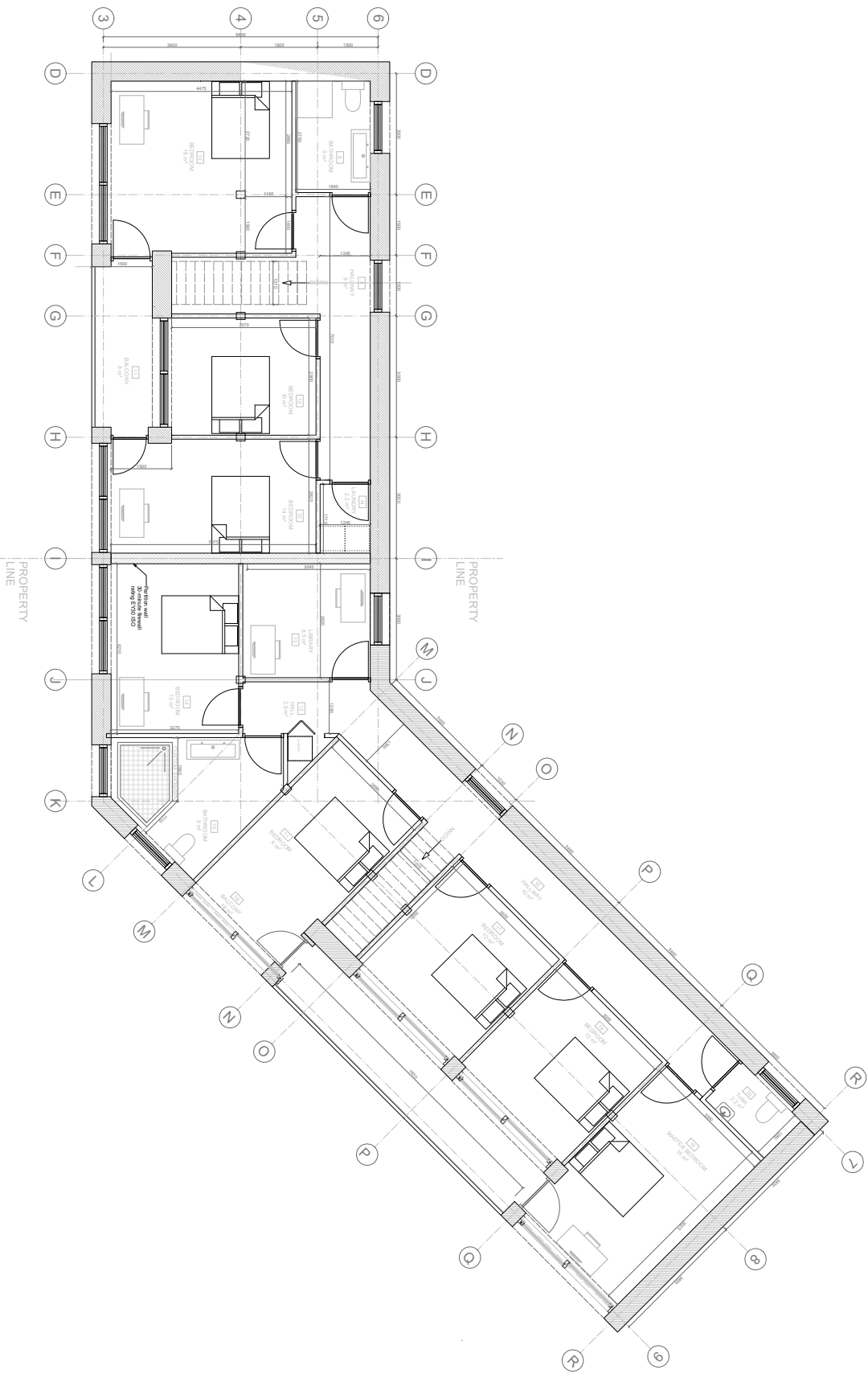
# 2 SCHEMATIC DESIGN

# 2.1 ARCHITECTURE PLAN

# GROUND FLOOR



# FIRST FLOOR

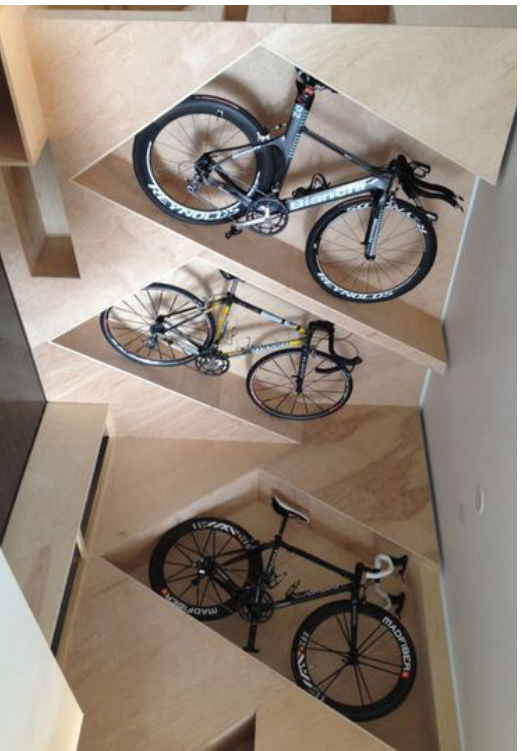


# 2.2 BIKE PARKING PLOT

# INSIDE BICYCLE PARKING



45 degrees



45 degrees



Vertical



Parallel to the wall

# ALTERNATIVE BICYCLE PARKING



Ceiling



Hoist bicycle lift



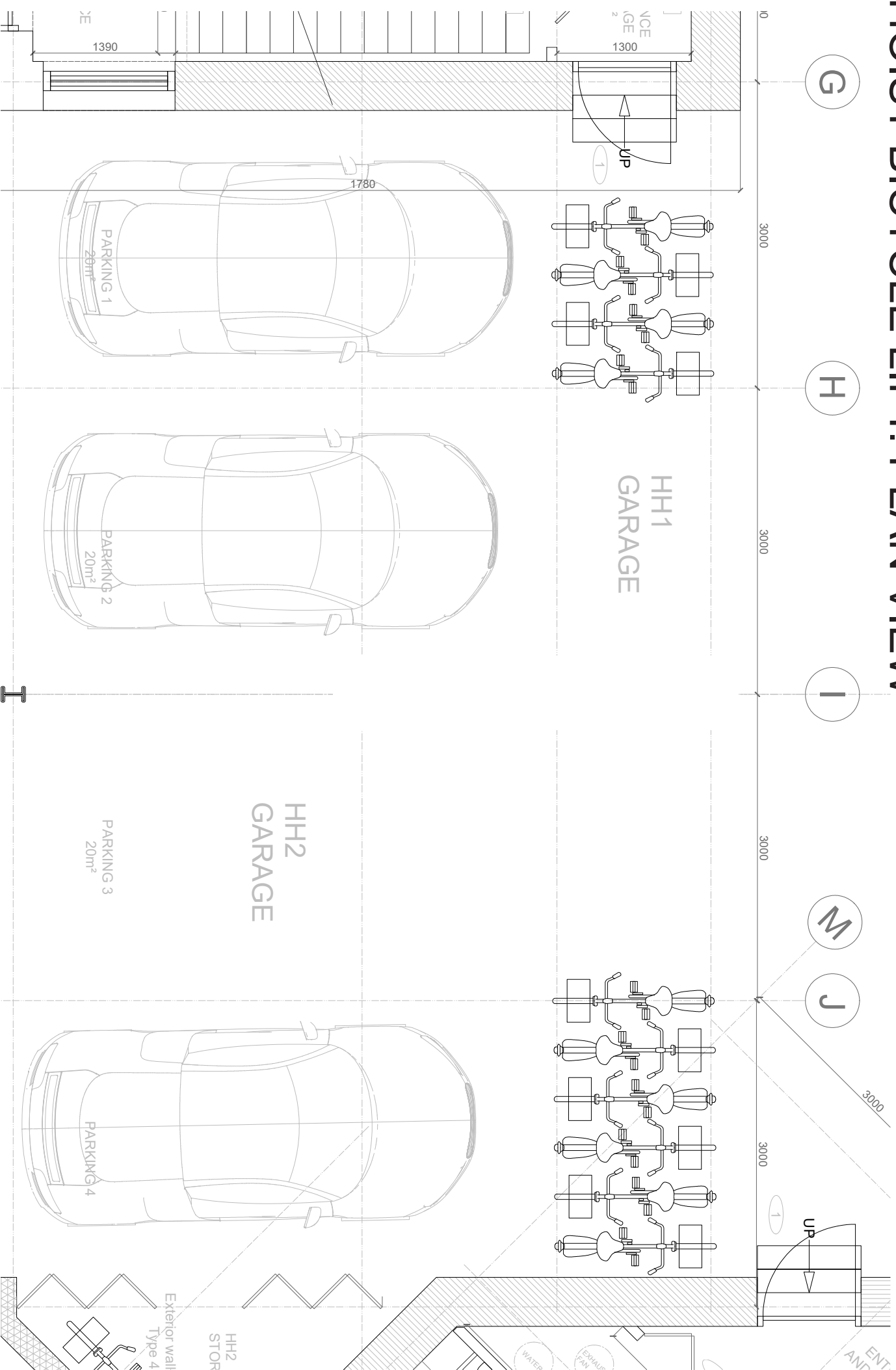
Hidden



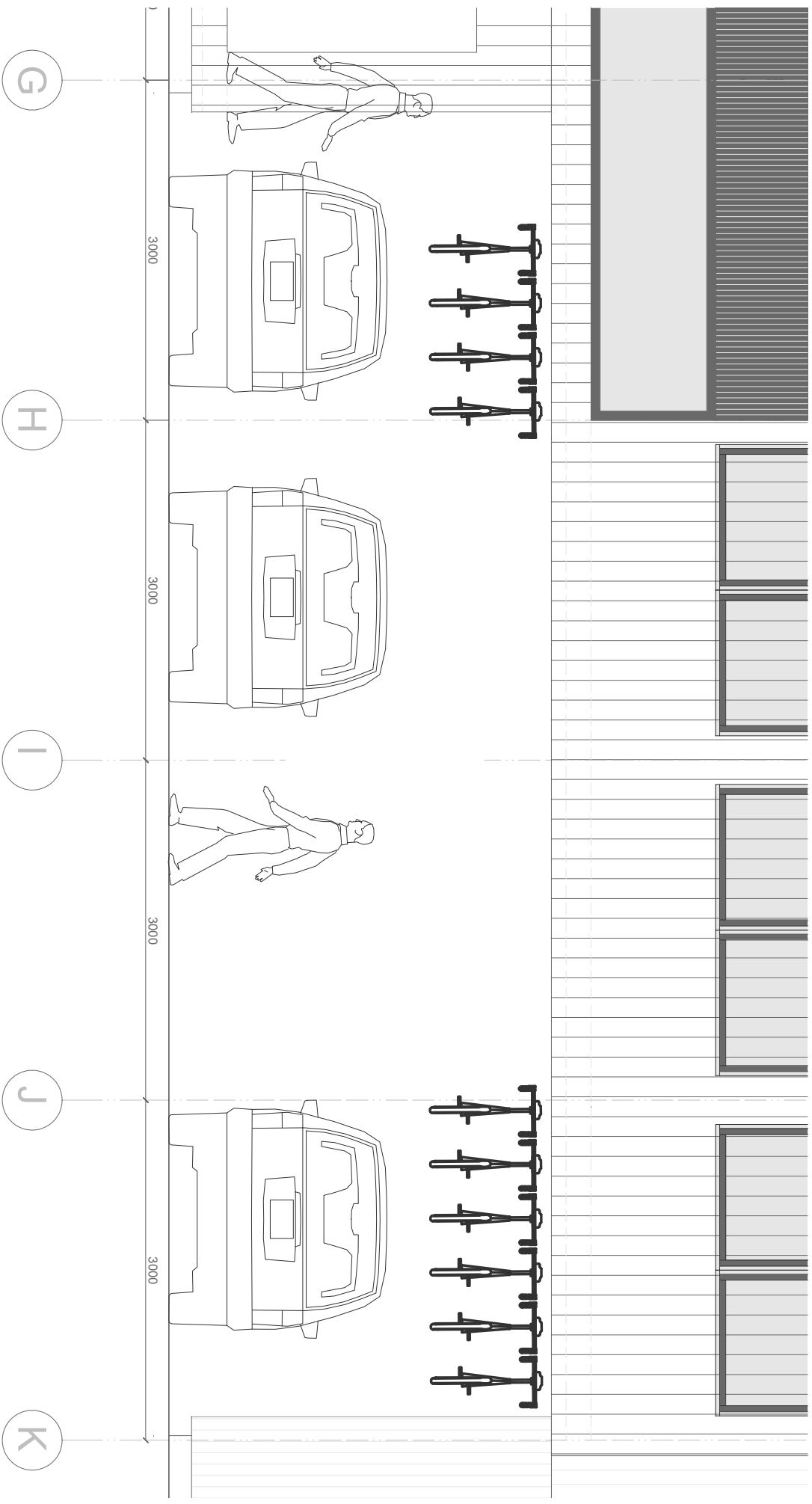
Detached



# HOIST BICYCLE LIFT. PLAN VIEW

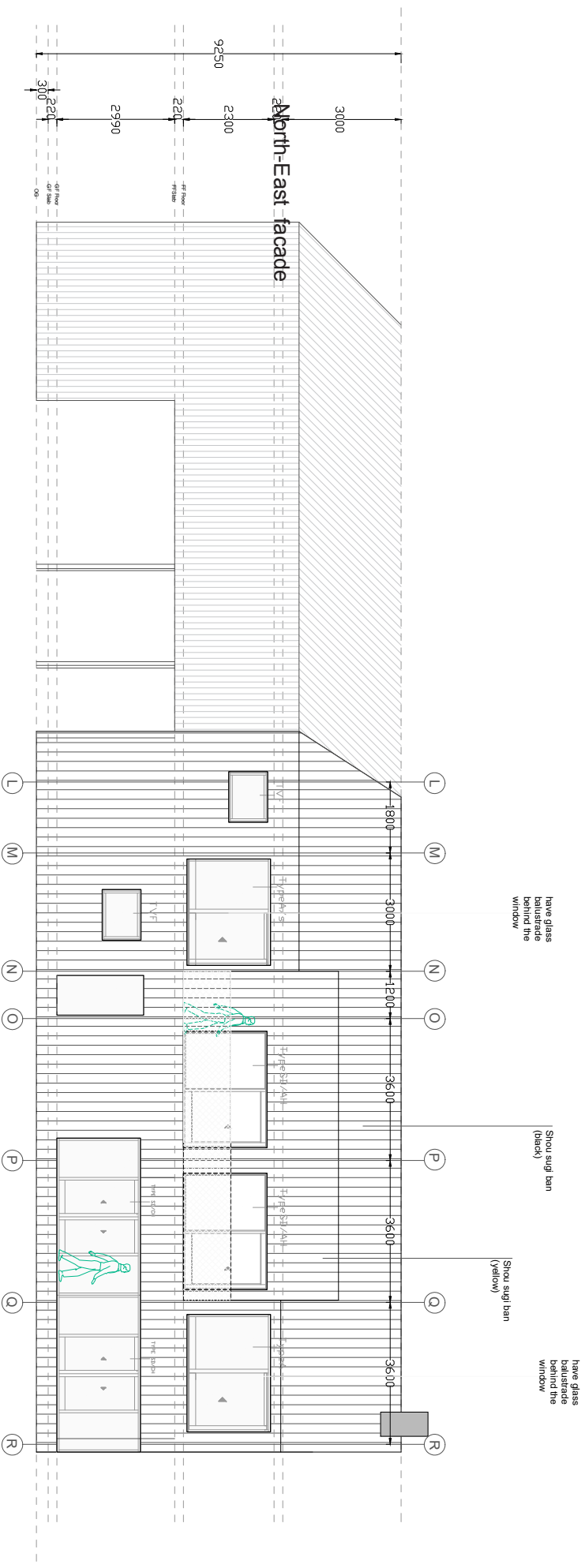
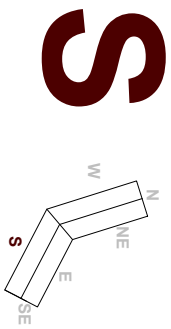


# HOIST BICYCLE LIFT. SECTION VIEW

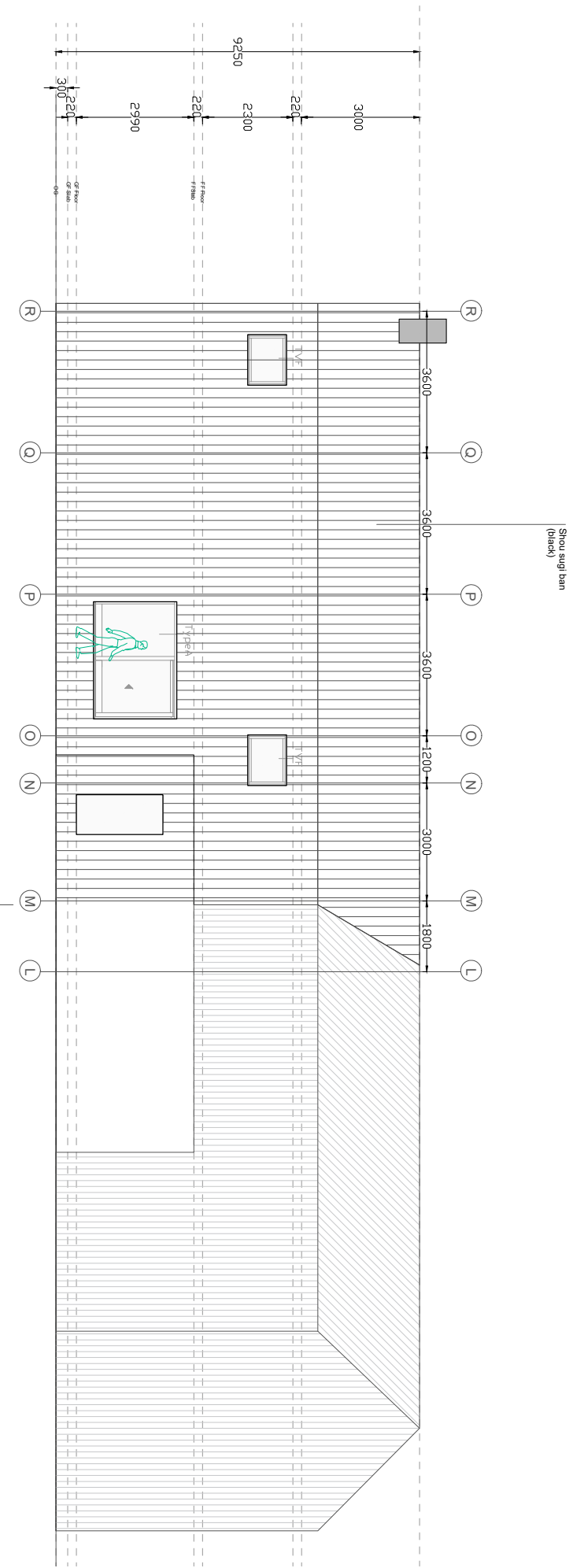
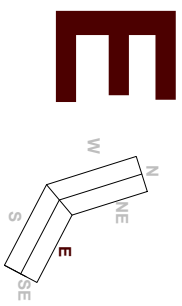


# 2.3 ELEVATION

# FACADE-SOUTH

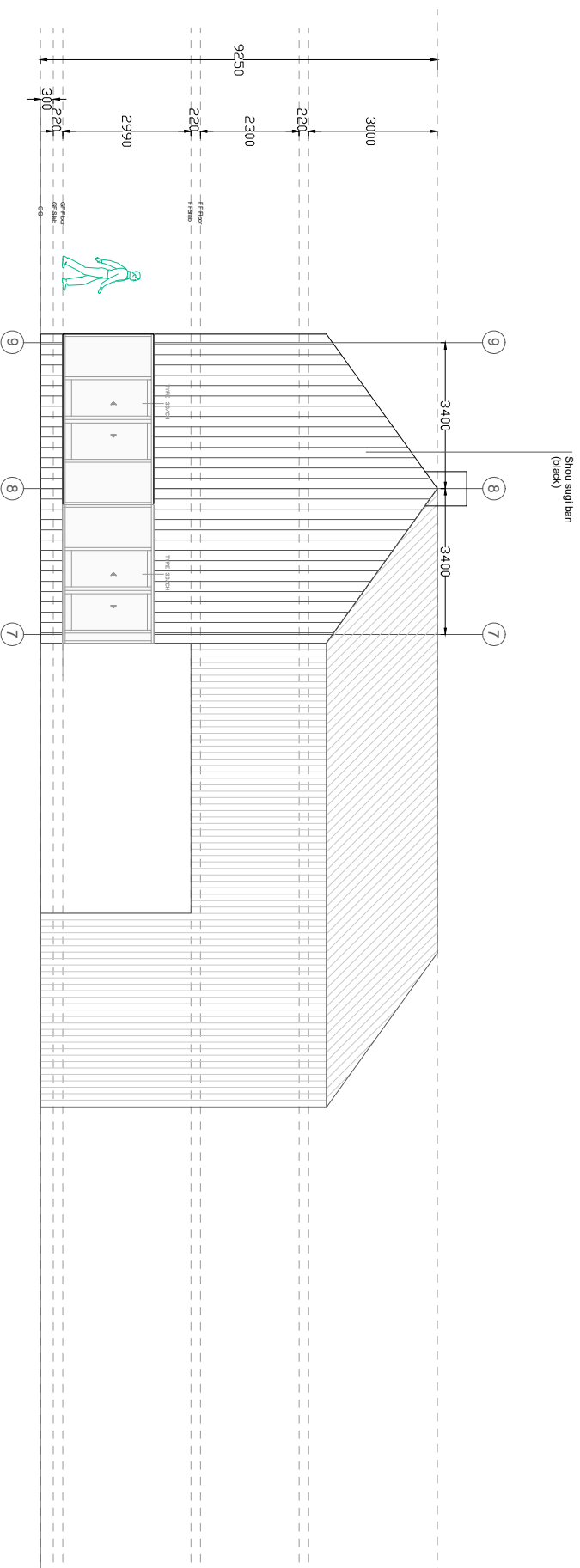
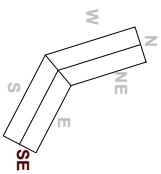


# FACADE-EAST

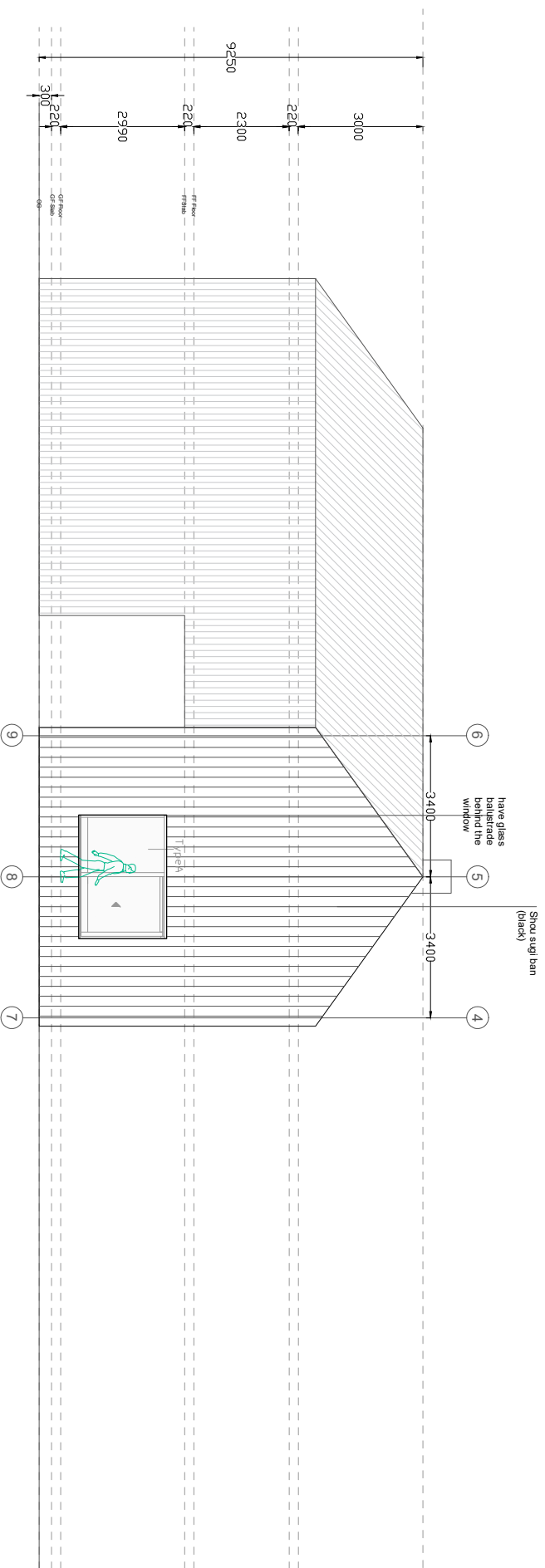
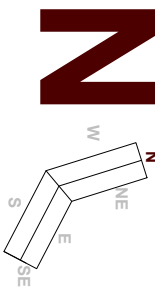


# FACADE-SOUTH EAST

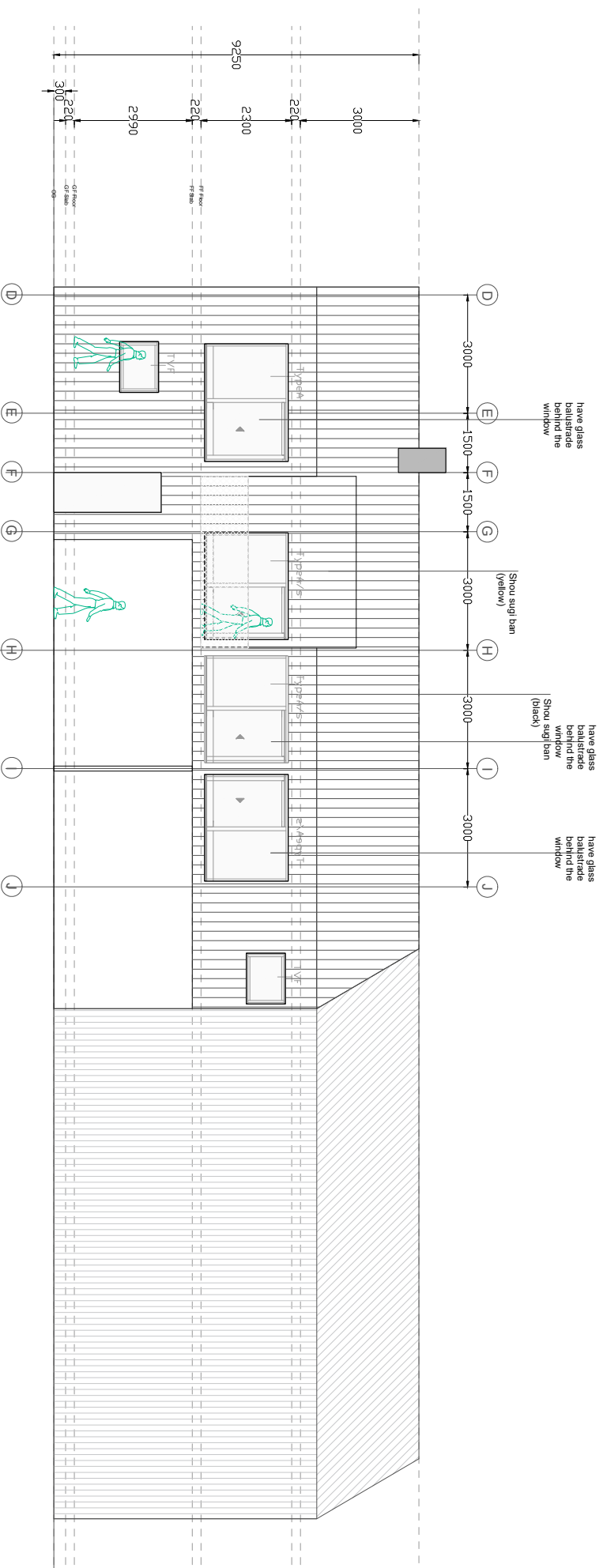
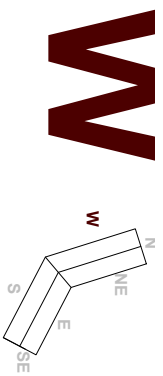
# SE



# FACADE-NORTH



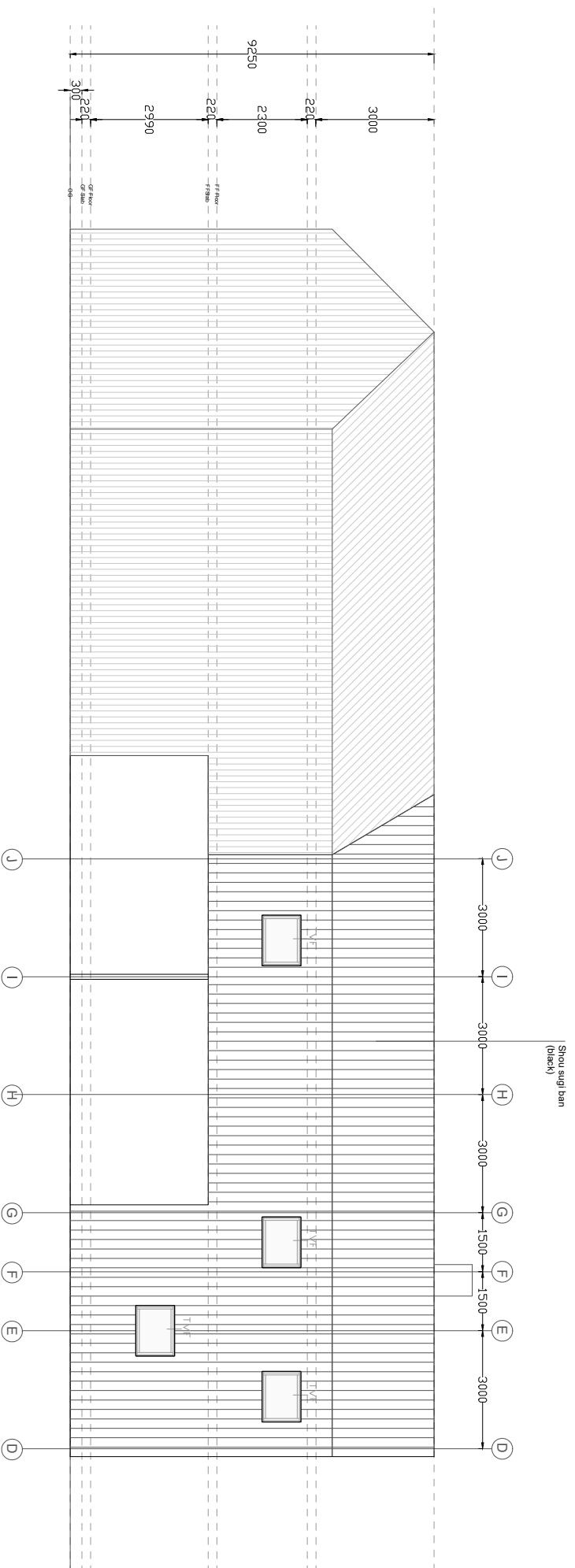
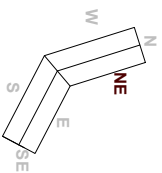
# FACADE-WEST





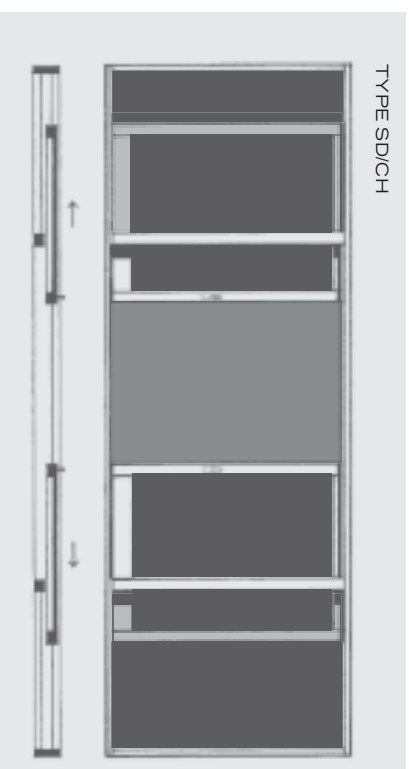
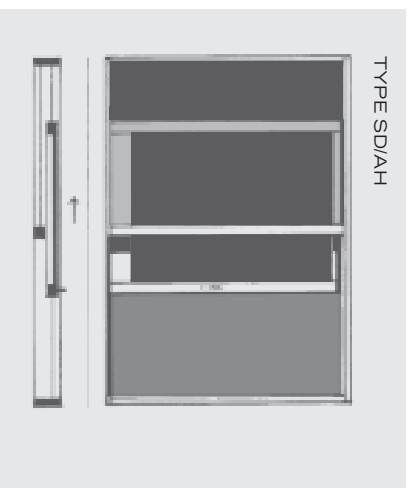
# FACADE-NORTH EAST

# NE

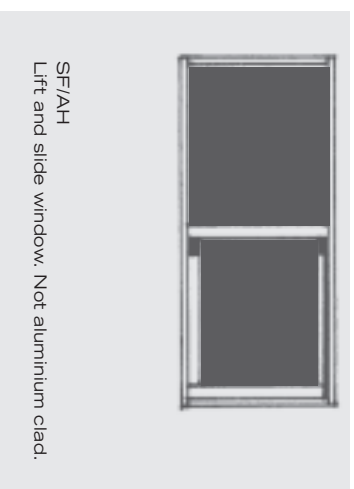


# OPTION 1 - WINDOWS AND DOOR FROM HAJOM

## Door selection

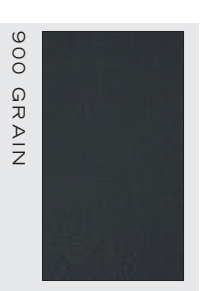


## Window selection



## Colour selection

Material: wood or aluminium



# 2.4 WINDOWS FROM HAJOM

# VISTON OF DOOR FRAME WITH CHARRED WOOD

Door selection

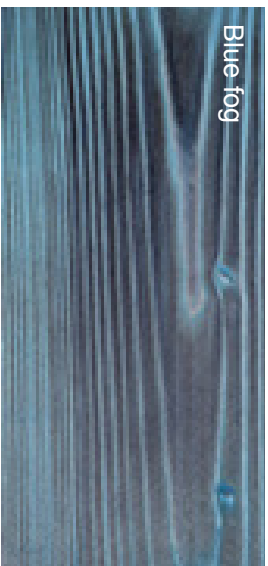


# 2.5 MATERIAL

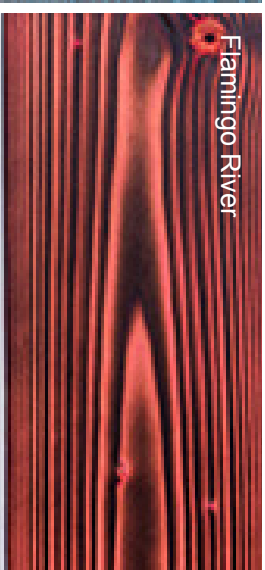
# CHARRED WOOD SUPPLIER - CUSTOMZOLE ( POLISH )

[HTTP://WWW.CUSTOMZOLE.PL/](http://www.customzole.pl/)

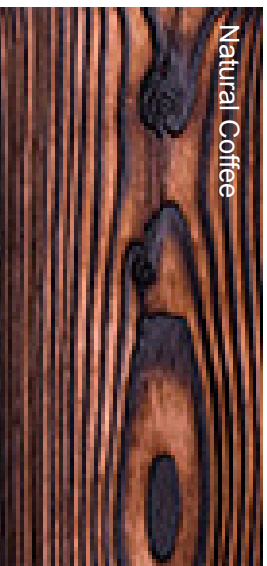
wood type



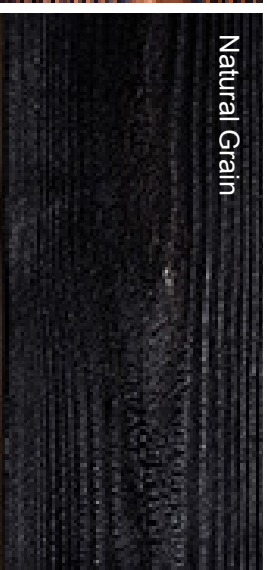
Blue fog



Flamingo River



Natural Coffee



Natural Grain



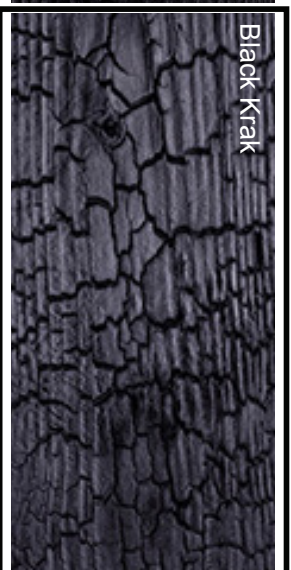
Natural Latte



Sand River



Natural black



Black Krak

## SHOU SUGI BAN

We are the first company in Poland, specializing in wood processing using a technique called Shou Sugi Ban. It is an old Japanese technique dating back to 1700, originally used to protect wood, rediscovered offers unlimited arrangement possibilities.

### SIZE

Width: 100-150 mm

Length: 500-5000mm

Thickness: 20-30mm

# CHARRED WOOD SUPPLIER - CUSTOMZOLE ( POLISH )

[HTTP://WWW.CUSTOMZOLE.PL/](http://www.customzole.pl/)

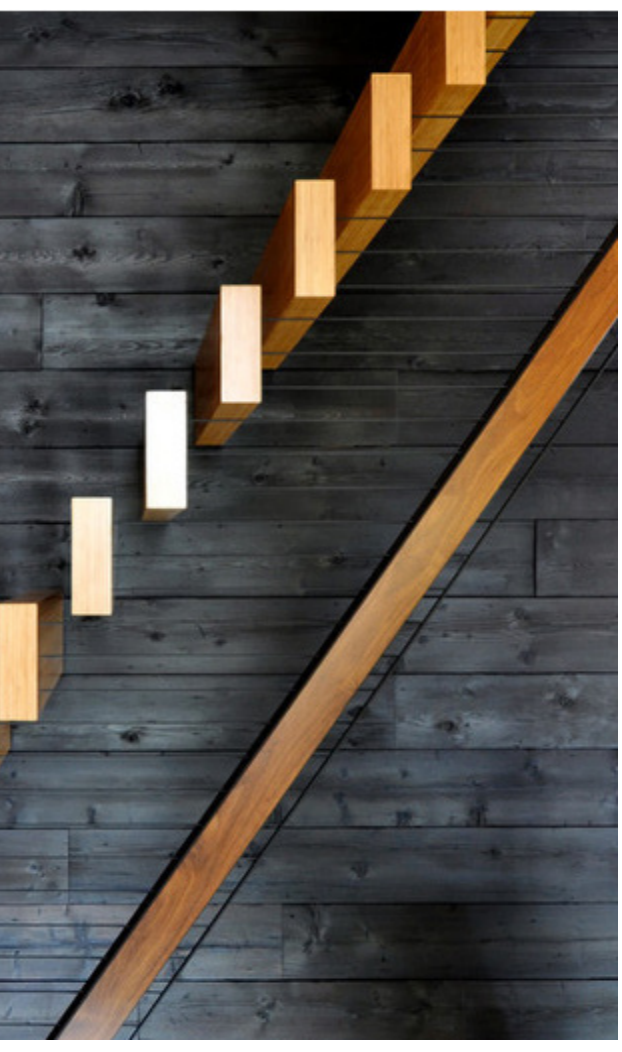
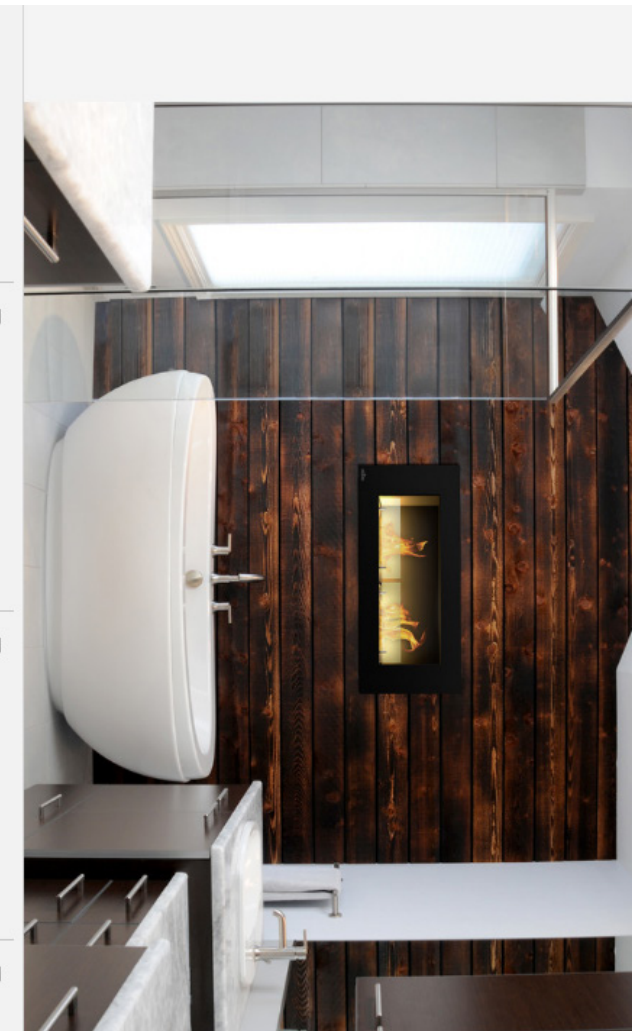
Black



yellow

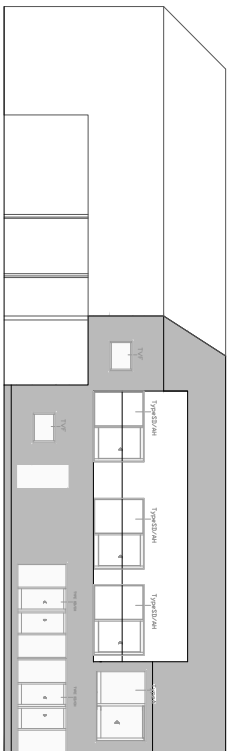


# REFERENCE FROM CUSTOMZOLE

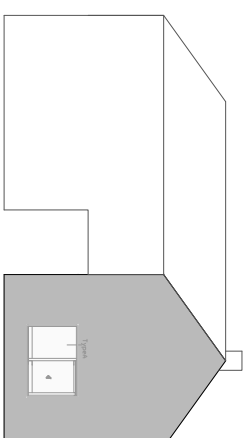




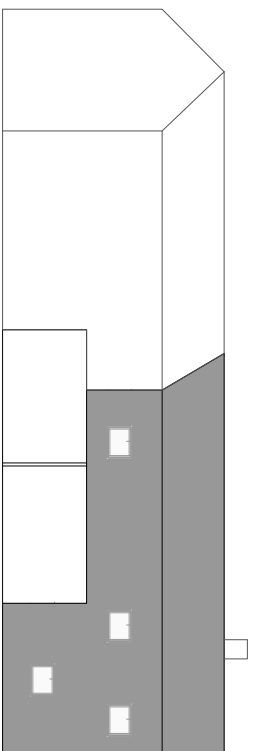
# OPTION2 - CALCULATION OF SURFACE NEED CHARRDE WOOD



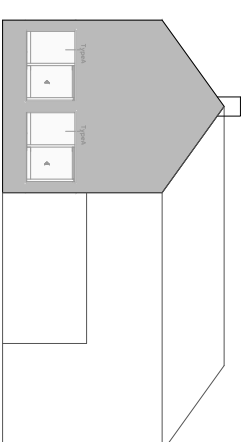
48.83 m2-wall + 72.19 m2-roof = 121.02 m2-total



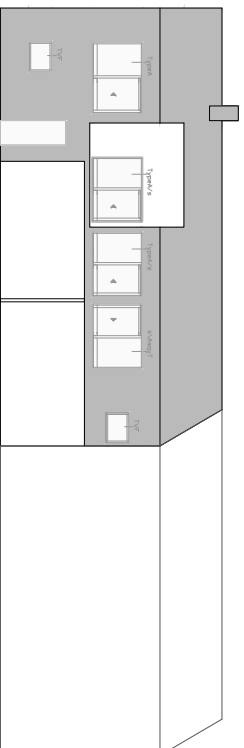
51 m2-wall



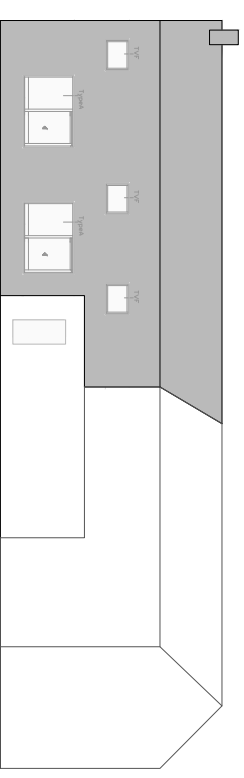
65.66 m2-wall + 65.60 m2-roof = 140.72 m2-total



44.65 m2-wall



44.32 m2-wall + 72.19 m2-roof = 140.72 m2-total

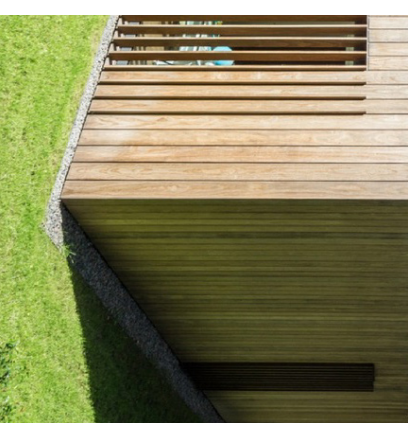
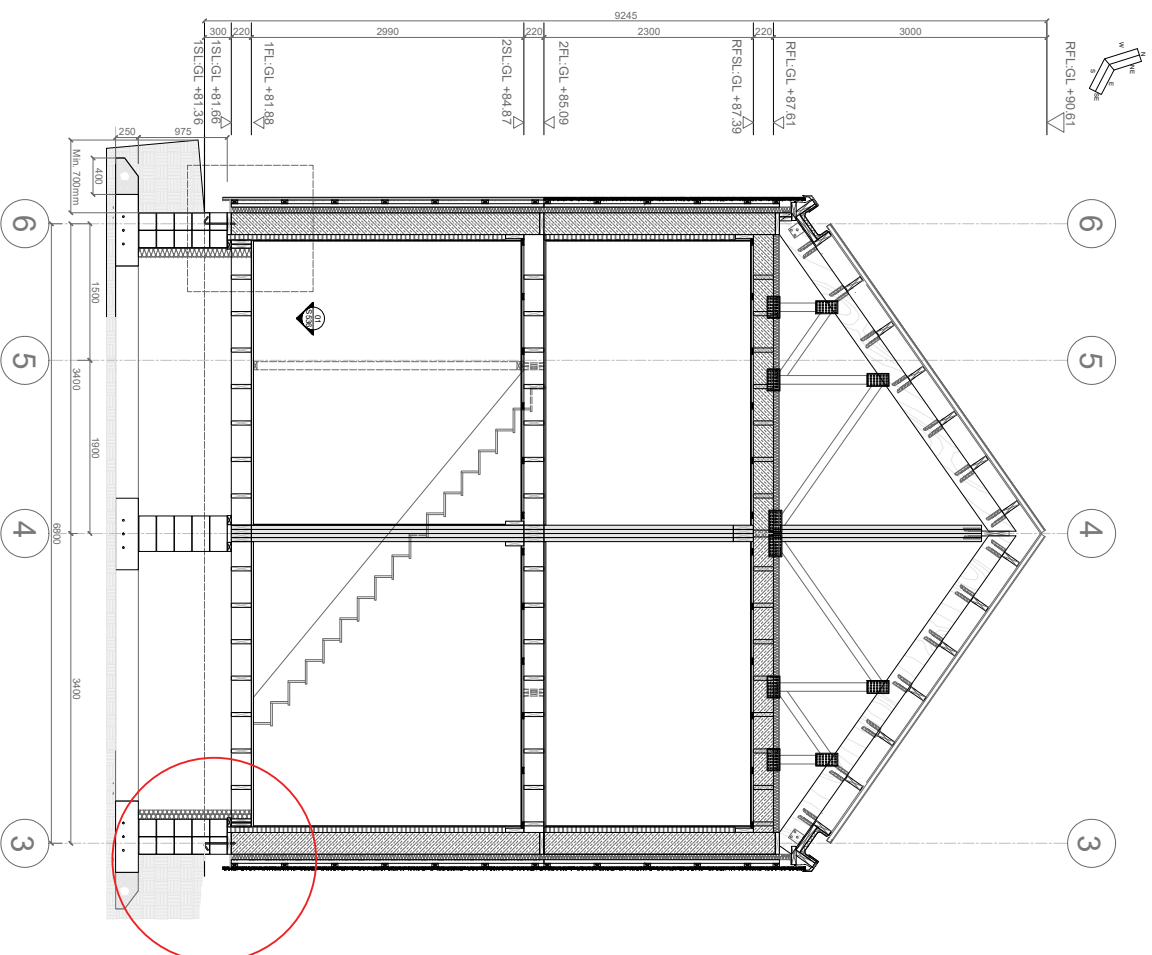


72.12 m2-wall + 65.60 m2-roof = 140.72 m2-total

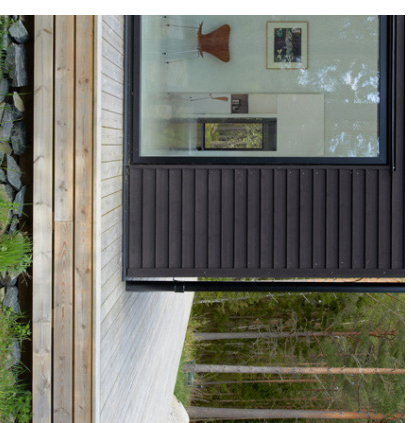
**TOTAL SQM OF EXTERIOR: 638.83 M2**

# 2.6 SECTION AND STRUCTURE

# SHORT SECTION

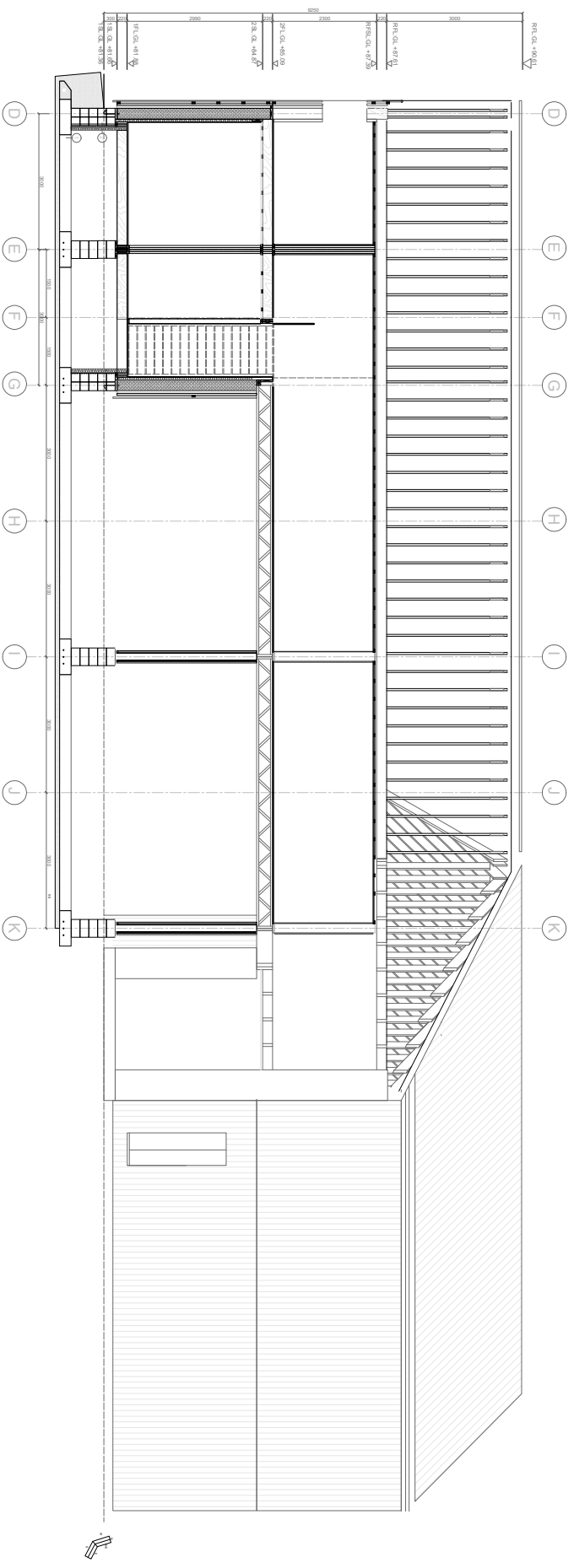


With stone protection foundation

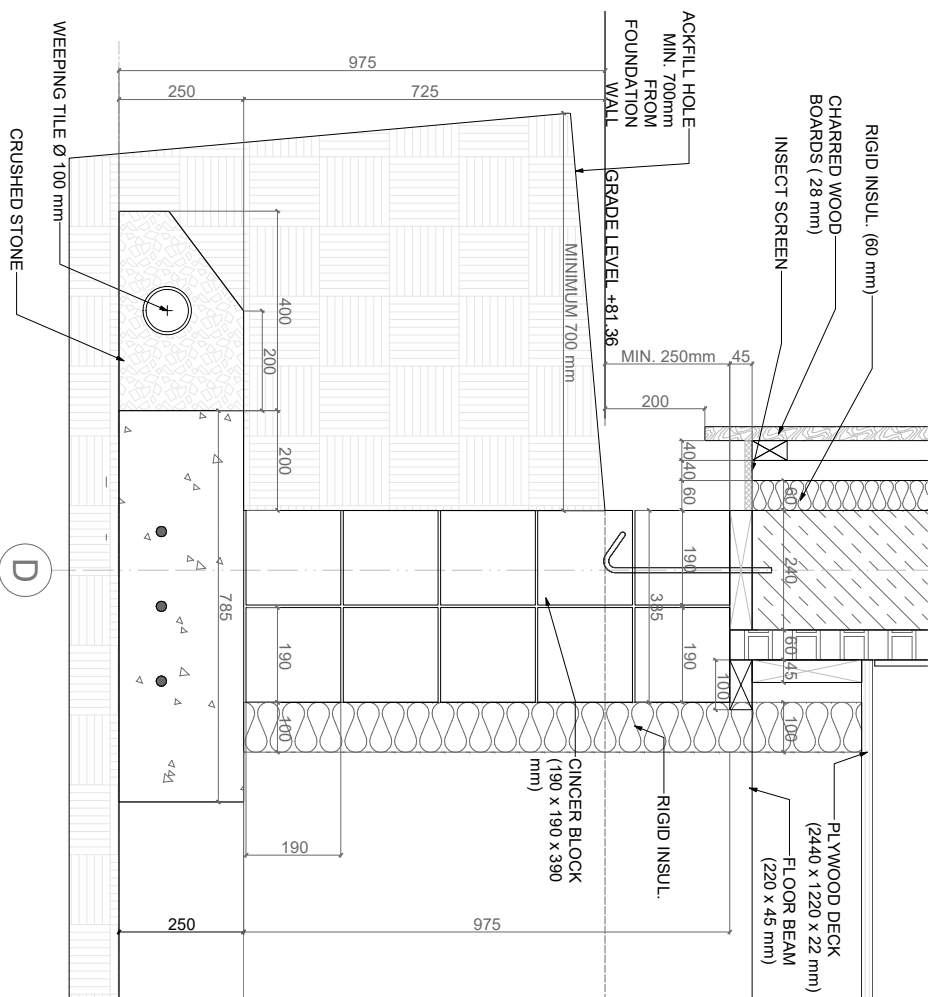


With wood platform

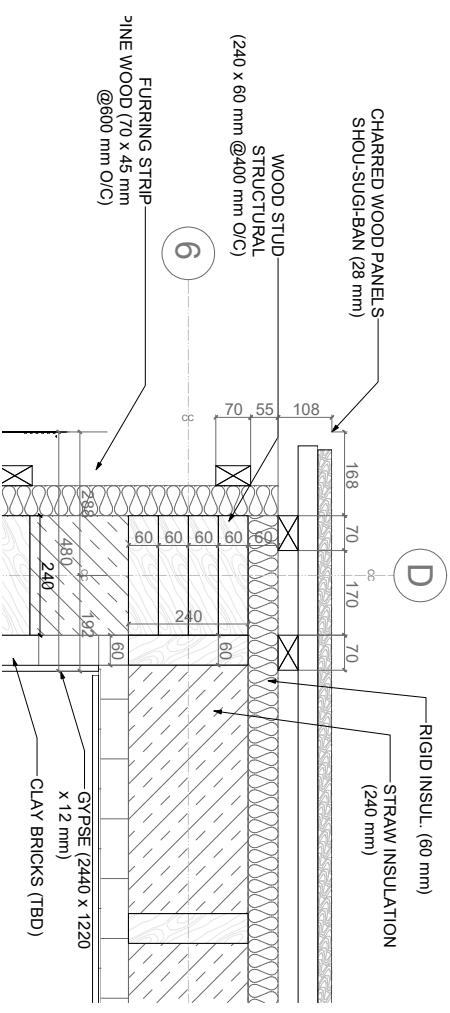
# LONG SECTION



# ZOOM IN DETAIL

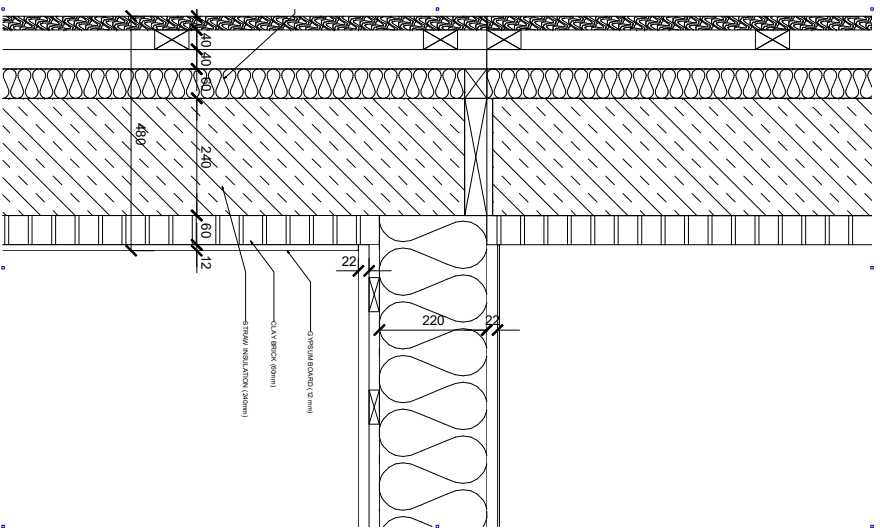


DEATAIL 1 - FOUNDATION AND FACADE

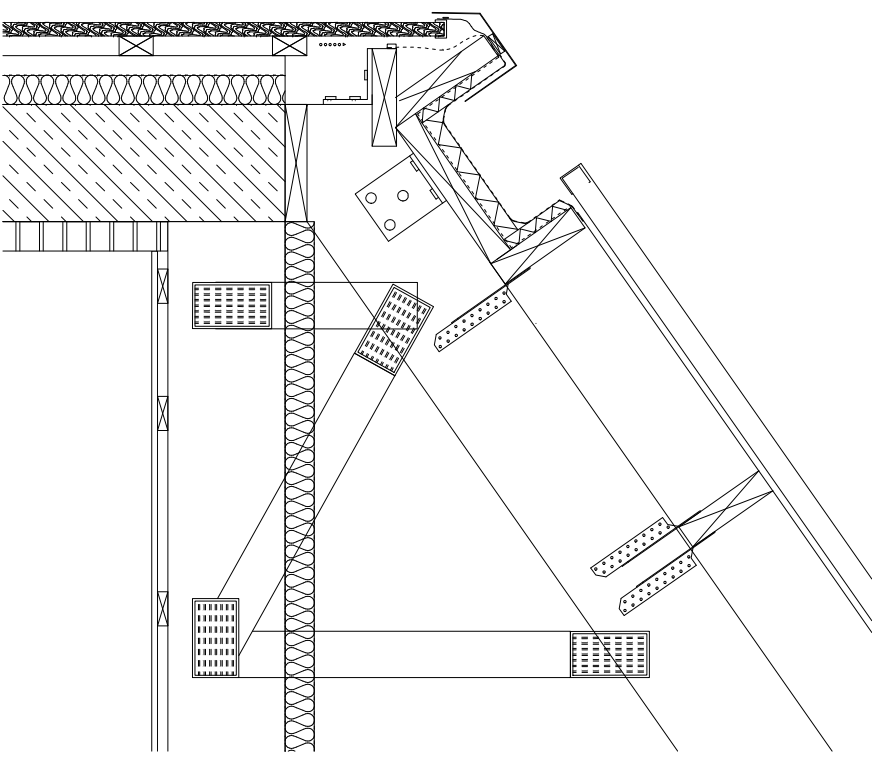


DEATAIL 2

# ZOOM IN DETAIL



DEATAIL3-WALL WITH FLOOR



DEATAIL4- ROOF TOP CONNECTION WITH WALL

# 2.7 VISUALIZATION

# 2.7.1 EXTERIOR WALL



# FACADE COMPOSITION



# FACADE COMPOSITION



# FACADE COMPOSITION



# 2.7.2 WINDOWS FRAME

# WINDOWS WITH WHITE



# WINDOWS WITH REFLECTION STEEL



# WINDOWS WITH REFLECTION STEEL



# WINDOWS WITH REFLECTION STEEL





# 2.7.3 GARAGE

# WITH SINGLE COLOUMNS



# WITH SINGLE COLOUMNS WRAP WITH WOOD



# WITH SINGLE WALL



# 2.7.4 OUTSIDE PLATFORM

# WITHOUT HANDRAIL



# WITH GLASS HANDRAIL



# 2.7.5 BALUSTRATE



# GLASS BALUSTRATE



# BALUSTRATE WITH BLACK WOOD



# 2.7.6 CHIMNEY

# ALUMINUM CHIMNEY



# STEEL CHIMNEY



# BLACK STEEL CHIMNEY



# 2.7.7 OVERALL RENDERING

# BACKSIDE





# BACKSIDE 2



# FRONT ENTRANCE

