

An aerial photograph of a coastal city at sunset. The sky is a mix of blue and orange, with wispy clouds. In the background, there are mountains and a large body of water. The city below is densely packed with buildings and greenery. The text "18 INDIVIDUALLY DESIGNED SUSTAINABLE VILLAS" is overlaid in white, bold, sans-serif font in the center of the image.

18 INDIVIDUALLY DESIGNED SUSTAINABLE VILLAS

VILLA
N°3

VILLA N°3

Each state-of-the-art design-led home will be quite unlike anything that has gone before. In a climate that lends itself to outdoor living, these villas will work as well outside as they do inside, if one can tell the difference. The outside/inside concept is found in each villa, with the lounge and terrace seamlessly merging into one huge living space.

In key parts of the villas, both at ground level and upstairs, the windows will disappear into the walls, ensuring perfectly clear views and bringing the outside in. A combination of custom-designed furniture and world-leading brands along with a stunning selection of artwork makes these fabulous homes something to be truly proud of.





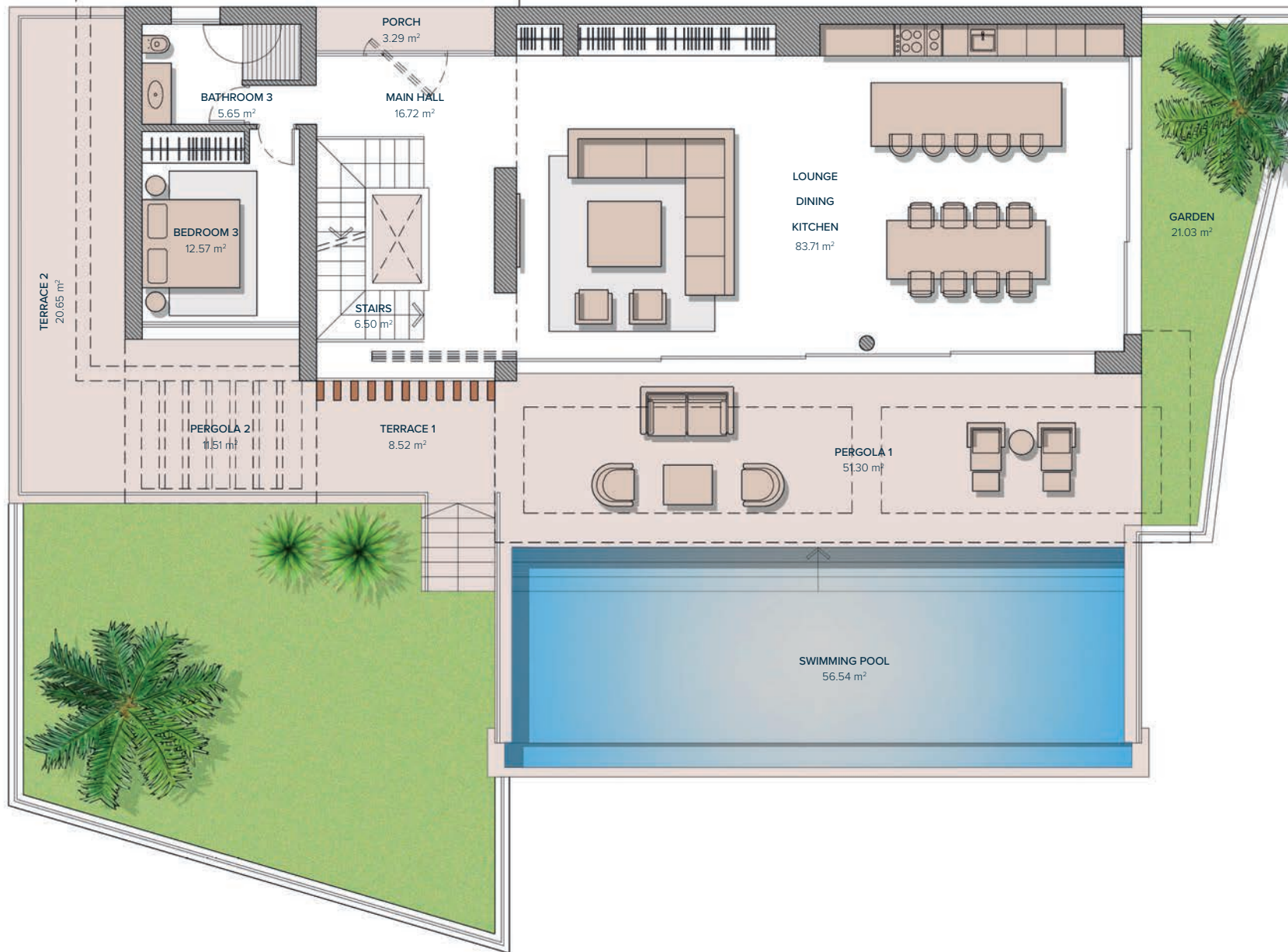
VILLA N°3

GROUND FLOOR	143,18 m ²
FIRST FLOOR	112,81 m ²
BASEMENT	249,00 m ²
TOTAL	504,99 m²

PORCHES	3,29 m ²
TERRACES	69,66 m ²
PERGOLAS	82,64 m ²
TOTAL CONSTRUCTED	660,58 m²

PLOT	1.899,00 m²
GARDEN	84,38 m ²
SWIMMING POOL	56,54 m ²
TOTAL USEFUL AREA DECREE 218/2005	476,10 m²

These images are not contractual but only for illustrative purposes. The images are subject to technical, legal or commercial modifications approved by the project management or the competent authority. The 3D images corresponding to the facades, common elements, and the rest of the spaces are merely indicative and will be subject to verification or Modification in the technical projects. The furniture of the 3D images is not included and the equipment of the villas will be indicated in the corresponding building and quality specifications. The energy certification corresponds with the one established in the project in process. All the information and documentation will be provided according to the terms established in the Royal Decree 515/1989 and in the rest of the autonomous or state regulations currently in force that could complement the Mentioned Decree.



VILLA Nº3 GROUND FLOOR

LIVING AREA

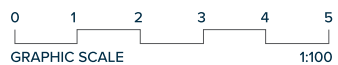
MAIN HALL	16,72 m ²
STAIRS	6,50 m ²
LOUNGE- DINING-KITCHEN	83,71 m ²
BATHROOM 3	5,65 m ²
BEDROOM 3	12,57 m ²

TOTAL 125,15 m²

ACCESS & TERRACES

PORCH ACCESS	3,29 m ²
TERRACE 1	8,52 m ²
TERRACE 2	20,65 m ²
PERGOLA 1	51,30 m ²
PERGOLA 2	11,51 m ²
JARDÍN	21,03 m ²

TOTAL 116,30 m²



Entrance	1
	0
	-1

These images are not contractual but only for illustrative purposes. The images are subject to technical, legal or commercial modifications approved by the project management or the competent authority. The 3D images corresponding to the facades, common elements, and the rest of the spaces are merely indicative and will be subject to verification or Modification in the technical projects. The furniture of the 3D images is not included and the equipment of the villas will be indicated in the corresponding building and quality specifications. The energy certification corresponds with the one established in the project in process. All the information and documentation will be provided according to the terms established in the Royal Decree 515/1989 and in the rest of the autonomous or state regulations currently in force that could complement the Mentioned Decree.



VILLA Nº3 FIRST FLOOR

BEDROOMS

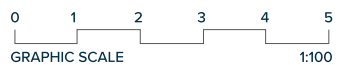
HALL 1	16,97 m ²
STAIRS	6,50 m ²
BATHROOM 1	5,23 m ²
BEDROOM 1	13,94 m ²
BEDROOM 2	47,98 m ²
BATHROOM 2	9,84 m ²

TOTAL 100,46 m²

TERRACES

TERRACE 3	3,00 m ²
TERRACE 4	29,73 m ²

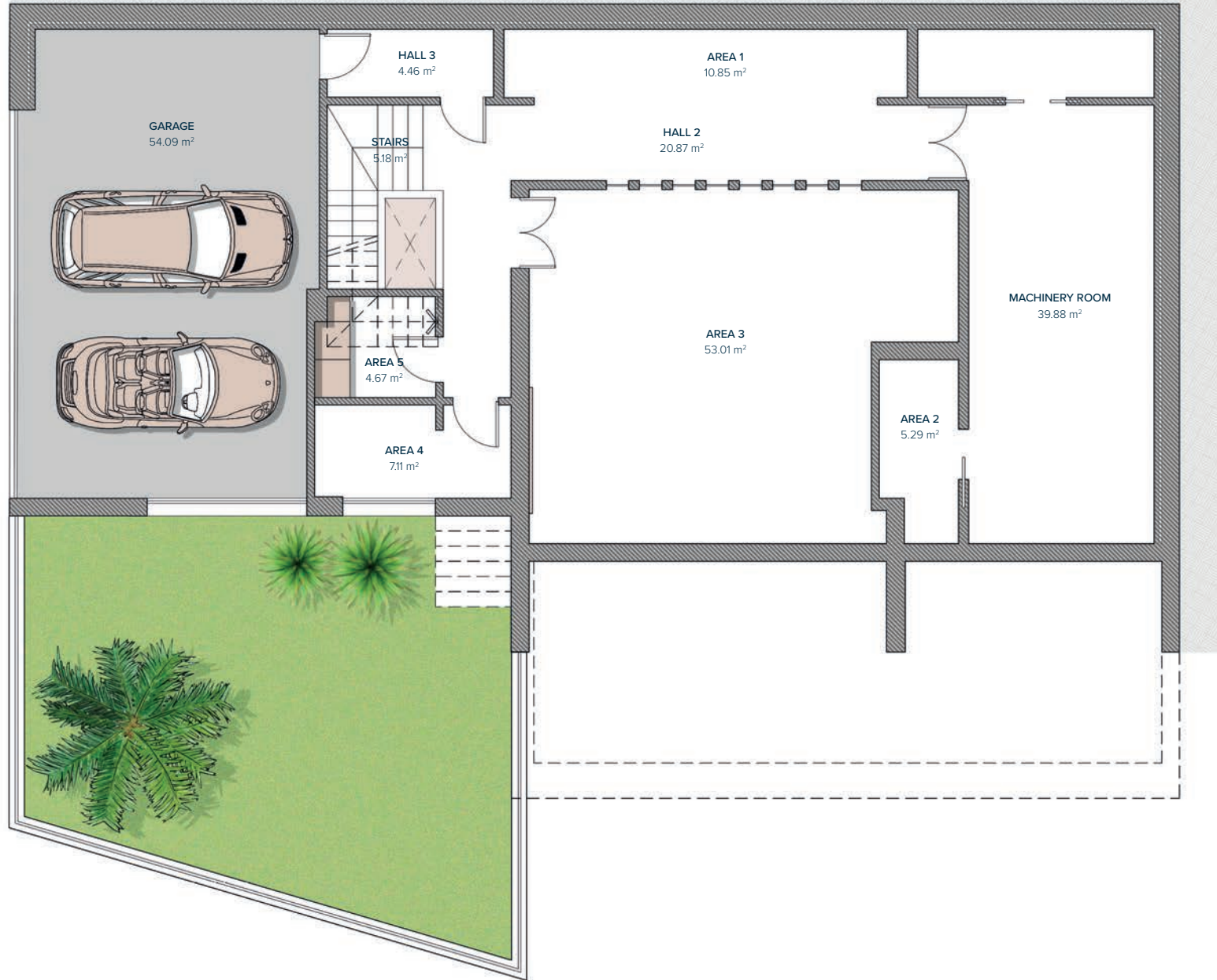
TOTAL 32,73 m²



Entrance

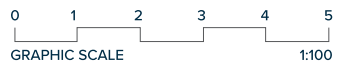
1
0
-1

These images are not contractual but only for illustrative purposes. The images are subject to technical, legal or commercial modifications approved by the project management or the competent authority. The 3D images corresponding to the facades, common elements, and the rest of the spaces are merely indicative and will be subject to verification or Modification in the technical projects. The furniture of the 3D images is not included and the equipment of the villas will be indicated in the corresponding building and quality specifications. The energy certification corresponds with the one established in the project in process. All the information and documentation will be provided according to the terms established in the Royal Decree 515/1989 and in the rest of the autonomous or state regulations currently in force that could complement the Mentioned Decree.



VILLA Nº3 BASEMENT

HALL 2	20,87 m ²
AREA 1	10,85 m ²
AREA 2	5,29 m ²
AREA 3	53,01 m ²
AREA 4	7,11 m ²
STAIRS	5,18 m ²
MACHINERY ROOM	39,88 m ²
AREA 5	4,67 m ²
HALL 3	4,46 m ²
GARAGE	54,09 m ²
PATIO	1,80 m ²
TOTAL	207,21 m²



Entrance

1
0
-1

These images are not contractual but only for illustrative purposes. The images are subject to technical, legal or commercial modifications approved by the project management or the competent authority. The 3D images corresponding to the facades, common elements, and the rest of the spaces are merely indicative and will be subject to verification or Modification in the technical projects. The furniture of the 3D images is not included and the equipment of the villas will be indicated in the corresponding building and quality specifications. The energy certification corresponds with the one established in the project in process. All the information and documentation will be provided according to the terms established in the Royal Decree 515/1989 and in the rest of the autonomous or state regulations currently in force that could complement the Mentioned Decree.

VILLA Nº3

