

# VILLA LIMON



USEFUL BUILT

## BASEMENT

LIVING AREA 178,50 m2 203,85 m2

## GROUND FLOOR

LIVING AREA 122,41 m2 199,55 m2

TERRACES 181,67 m2

## FIRST FLOOR

LIVING AREA 99,80 m2 178,38 m2

TERRACES 58,15 m2

## SOLARIUM

LIVING AREA 9,23 m2 25,24 m2

TERRACES 61,15 m2

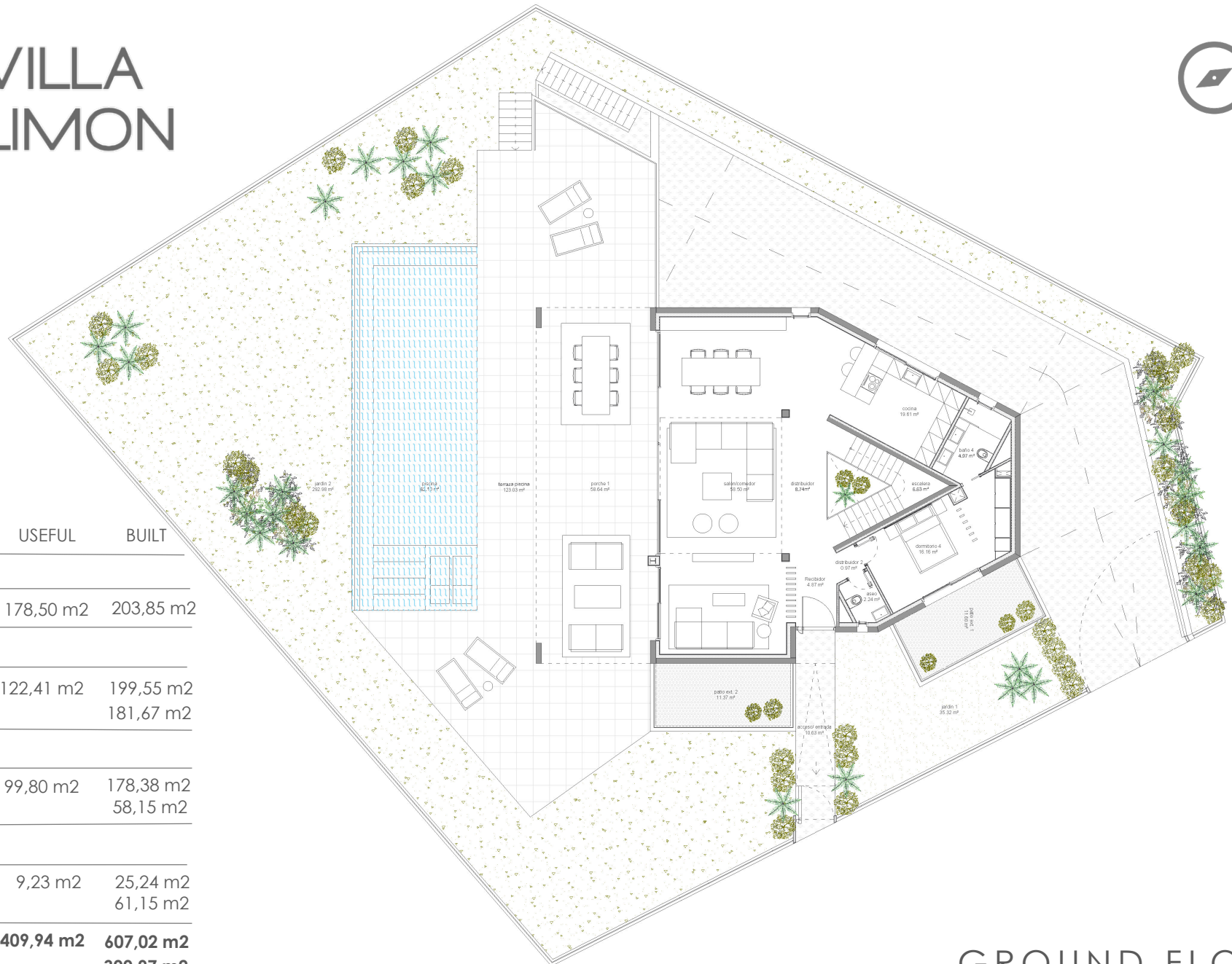
**TOTAL LIVING AREA 409,94 m2 607,02 m2**

**TOTAL TERRACES 300,97 m2**

**PLOT 981 m2**

BASEMENT

# VILLA LIMON



USEFUL BUILT

## BASEMENT

LIVING AREA 178,50 m<sup>2</sup> 203,85 m<sup>2</sup>

## GROUND FLOOR

LIVING AREA 122,41 m<sup>2</sup> 199,55 m<sup>2</sup>  
 TERRACES 181,67 m<sup>2</sup>

## FIRST FLOOR

LIVING AREA 99,80 m<sup>2</sup> 178,38 m<sup>2</sup>  
 TERRACES 58,15 m<sup>2</sup>

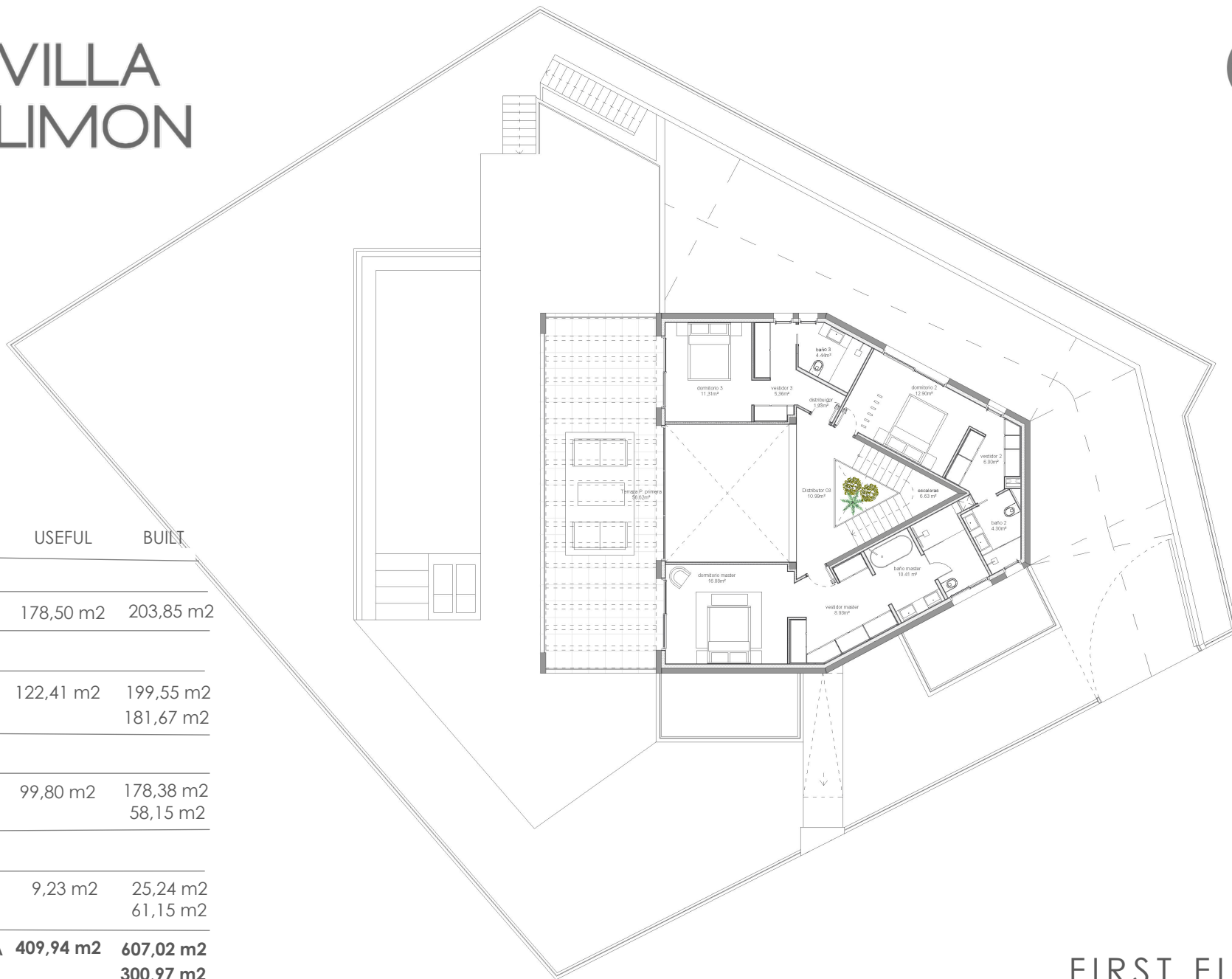
## SOLARIUM

LIVING AREA 9,23 m<sup>2</sup> 25,24 m<sup>2</sup>  
 TERRACES 61,15 m<sup>2</sup>

**TOTAL LIVING AREA 409,94 m<sup>2</sup> 607,02 m<sup>2</sup>**  
**TOTAL TERRACES 300,97 m<sup>2</sup>**  
**PLOT 981 m<sup>2</sup>**

GROUND FLOOR

# VILLA LIMON



USEFUL BUILT

## BASEMENT

LIVING AREA 178,50 m2 203,85 m2

## GROUND FLOOR

LIVING AREA 122,41 m2 199,55 m2  
TERRACES 181,67 m2

## FIRST FLOOR

LIVING AREA 99,80 m2 178,38 m2  
TERRACES 58,15 m2

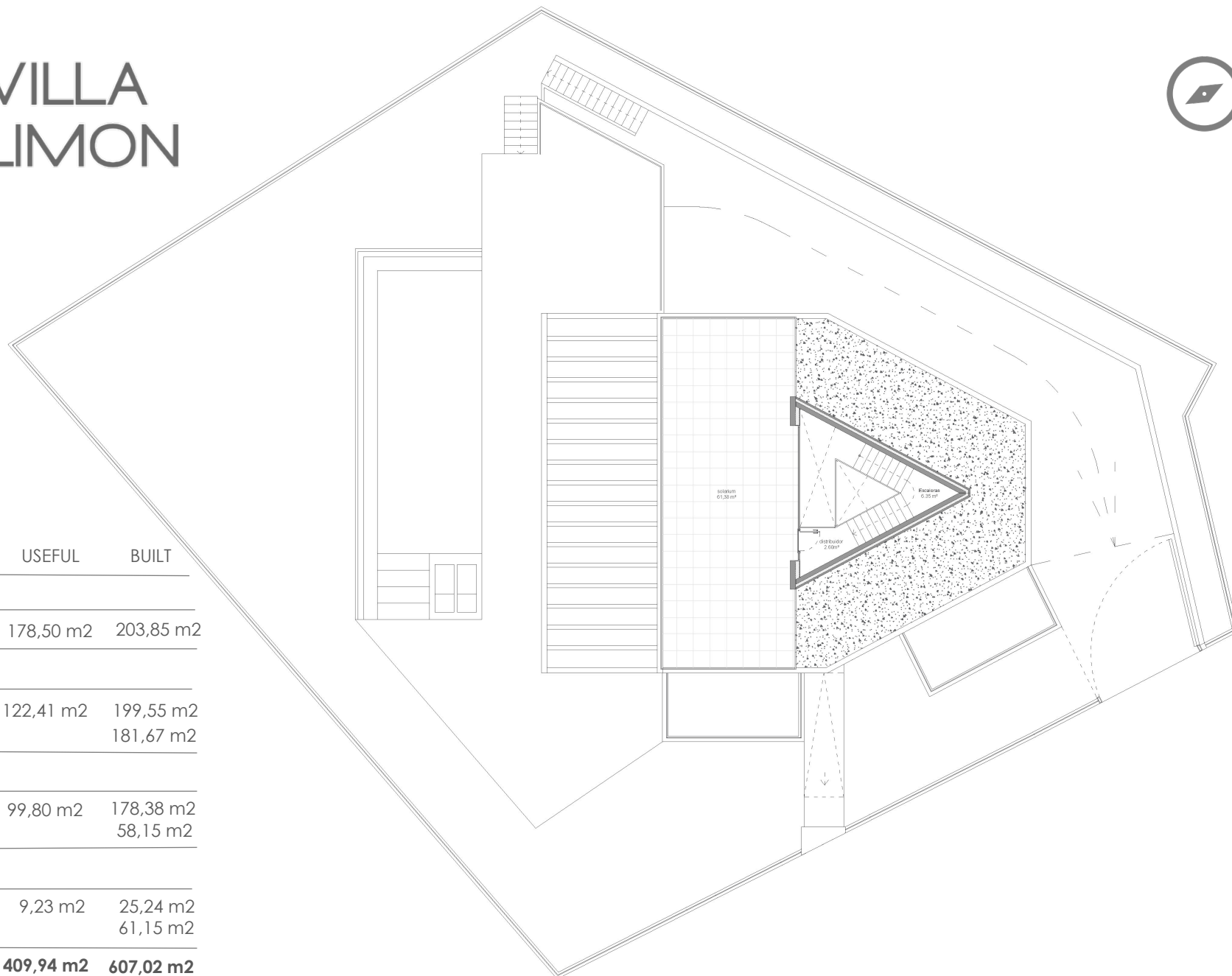
## SOLARIUM

LIVING AREA 9,23 m2 25,24 m2  
TERRACES 61,15 m2

**TOTAL LIVING AREA 409,94 m2 607,02 m2**  
**TOTAL TERRACES 300,97 m2**  
**PLOT 981 m2**

FIRST FLOOR

# VILLA LIMON



USEFUL      BUILT

## BASEMENT

LIVING AREA      178,50 m<sup>2</sup>      203,85 m<sup>2</sup>

## GROUND FLOOR

LIVING AREA      122,41 m<sup>2</sup>      199,55 m<sup>2</sup>  
 TERRACES      181,67 m<sup>2</sup>

## FIRST FLOOR

LIVING AREA      99,80 m<sup>2</sup>      178,38 m<sup>2</sup>  
 TERRACES      58,15 m<sup>2</sup>

## SOLARIUM

LIVING AREA      9,23 m<sup>2</sup>      25,24 m<sup>2</sup>  
 TERRACES      61,15 m<sup>2</sup>

**TOTAL LIVING AREA      409,94 m<sup>2</sup>      607,02 m<sup>2</sup>**  
**TOTAL TERRACES      300,97 m<sup>2</sup>**  
**PLOT      981 m<sup>2</sup>**

SOLARIUM