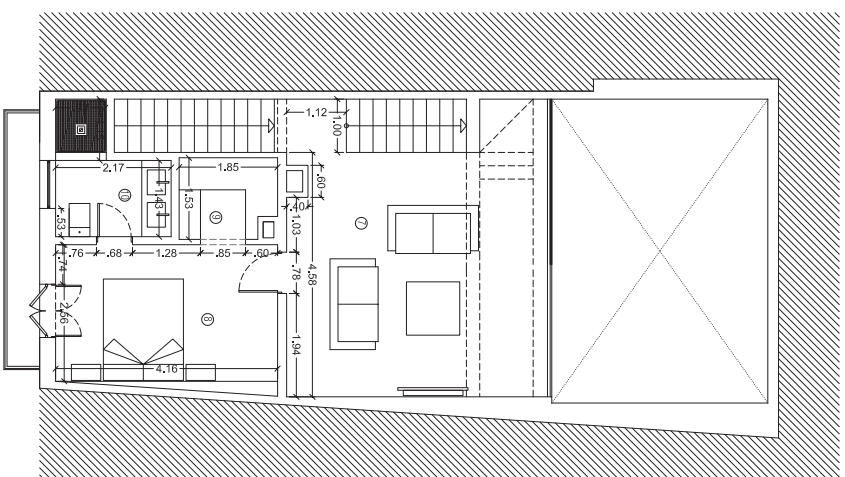
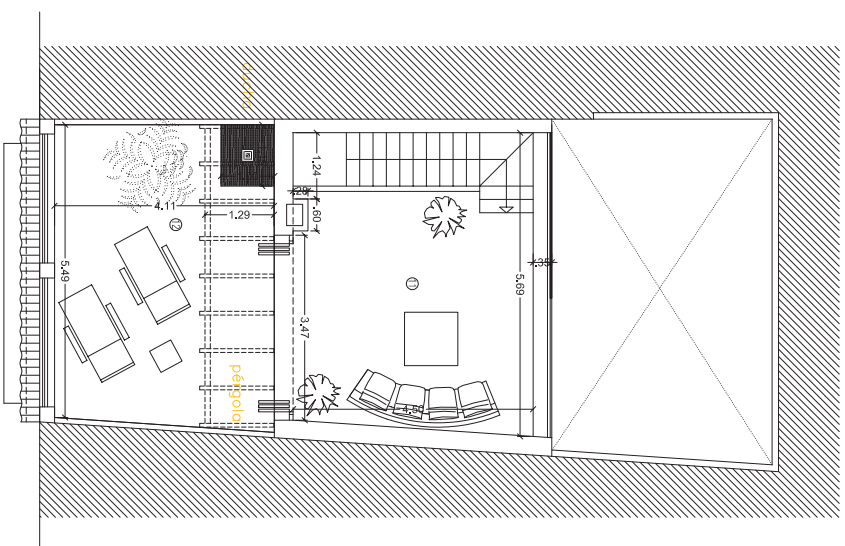


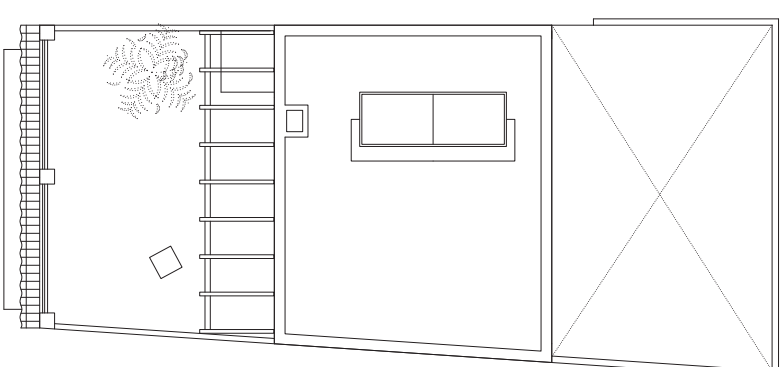
PLANTA BAJA / GROUND FLOOR



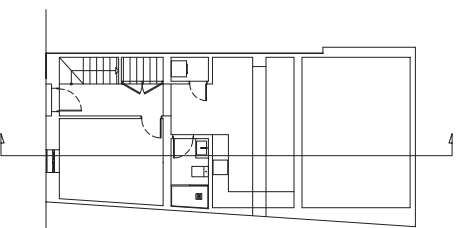
PLANTA ALTA / FIRST FLOOR



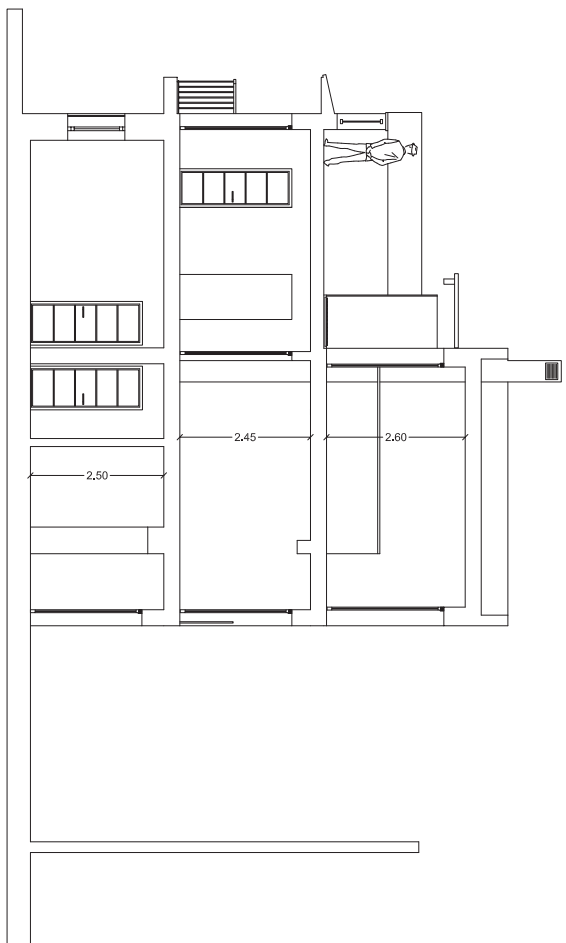
PLANTA TERRAZA / TERRACE FLOOR



PLANTA CUBIERTAS / ROOF FLOOR



SECTION / SECTION



CUADRO DE SUPERFICIES / SURFACES

Planta Baja / Ground floor	
1.- Hall	6.33m ²
2.- Oficina/Office	12.19m ²
3.- Cocina/Kitchen	20.31m ²
4.- Lavadero/laundry	1.26m ²
5.- Baño/Bathroom	3.61m ²
6.- Patio / Courtyard	22.84m ²
TOTAL BUILT AREA	56.57m²

Planta Primera / First Floor	
7.- Salon/Living room	25.26m ²
8.- Dormitorio/Bedroom	11.26m ²
9.- Vestidor/Walk in wardrobe	2.82m ²
10.- Baño/Bathroom	4.18m ²
TOTAL BUILT AREA	56.57m²

Planta Terraza / Terrace floor	
11.- Room	20.71m ²
12.- Terraza/Terrace	23.15m ²
TOTAL BUILT AREA	31.96m²

TOTAL AREA 145.10m²