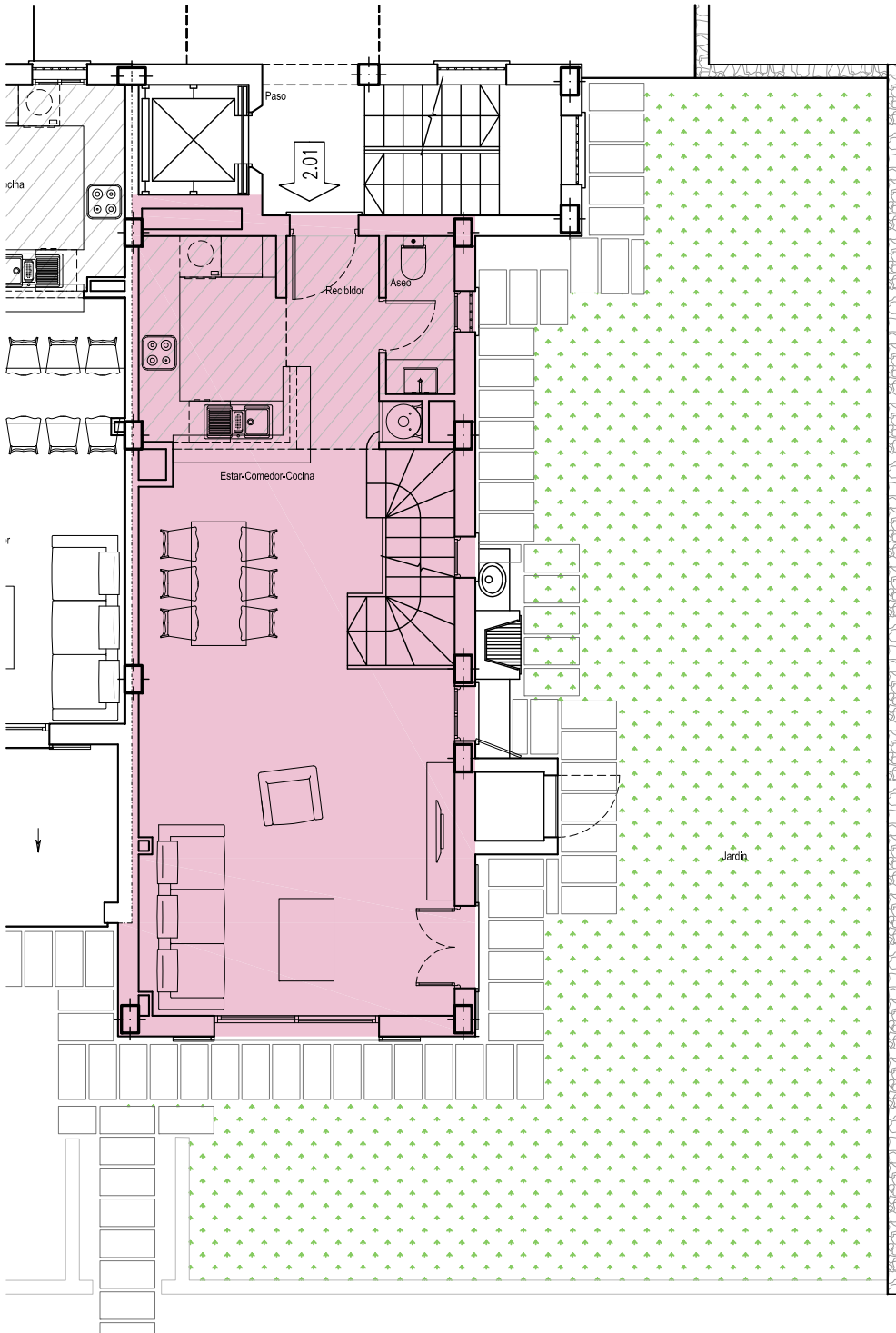


JARDINS DE PORTOCOLOM

ESTUDI D'ARQUITECTURA I URBANISME CONJUNTO DE VIVIENDAS, LOCALES, GARAJES Y PISCINAS

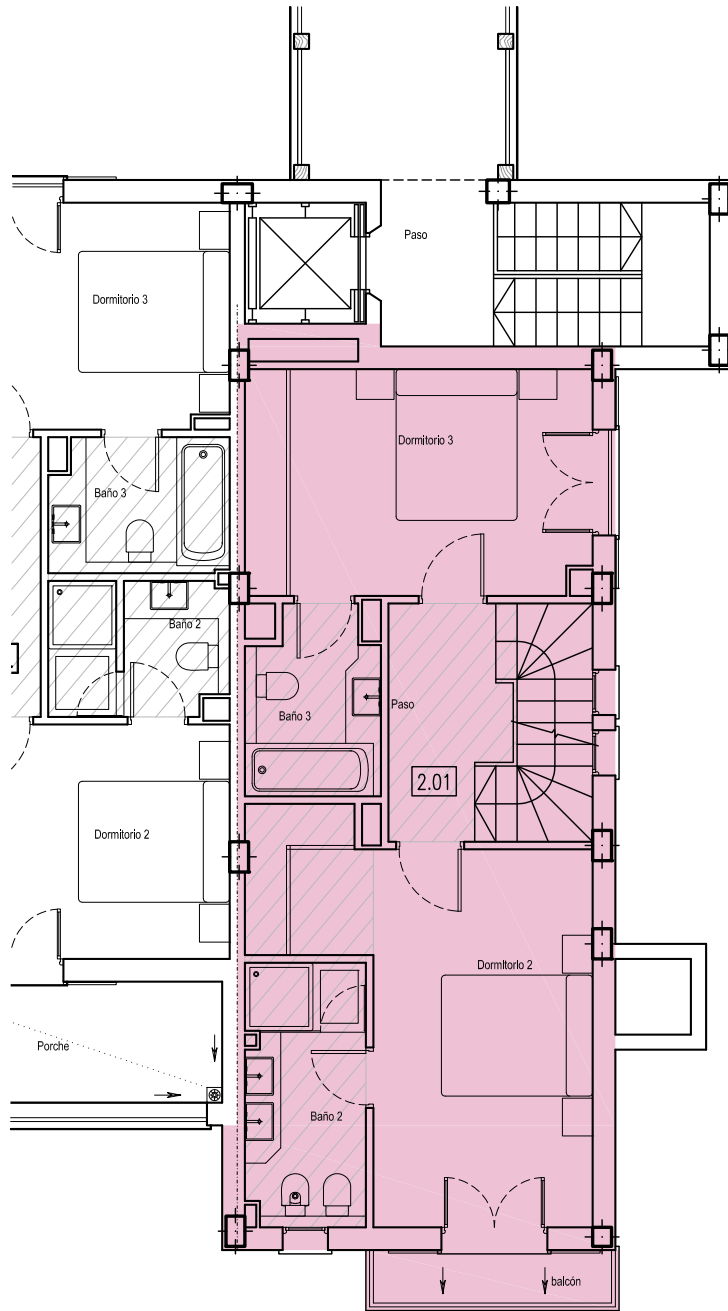
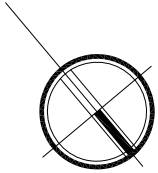


SUPERFICIES CONSTRUIDAS EDIFICIO 2	
VIVIENDA 2.01	
vivienda p.b.	60.65 m2
jardín	111.66 m2



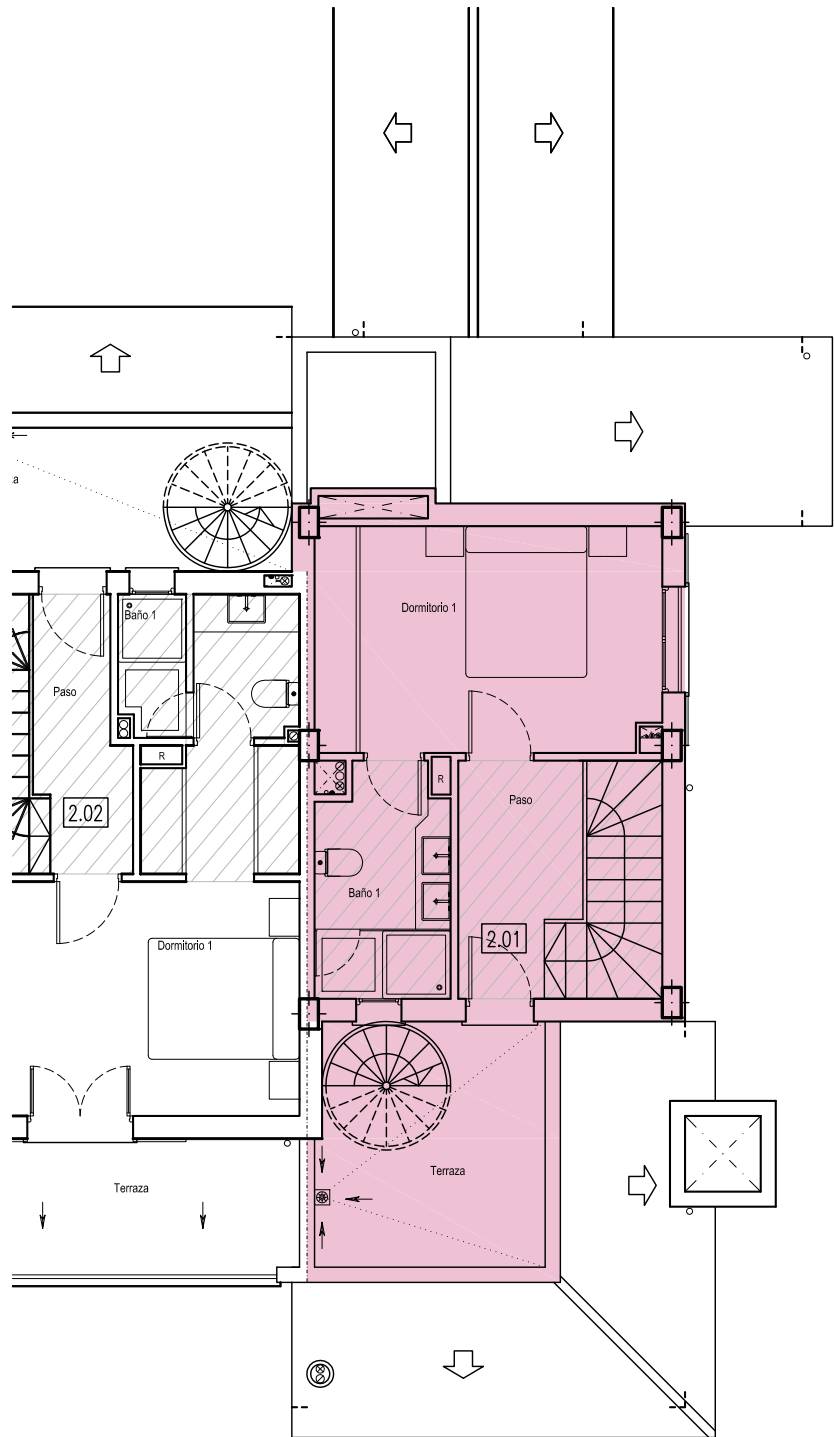
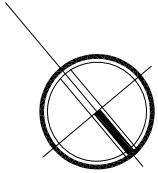
EDIFICIO 2 VIV. 2.01 P. BAJA
esc. 1/100

SUPERFICIES CONSTRUIDAS EDIFICIO 2	
VIVIENDA 2.01	
vivienda p.1	60.65 m2
balcón	2.68 m2



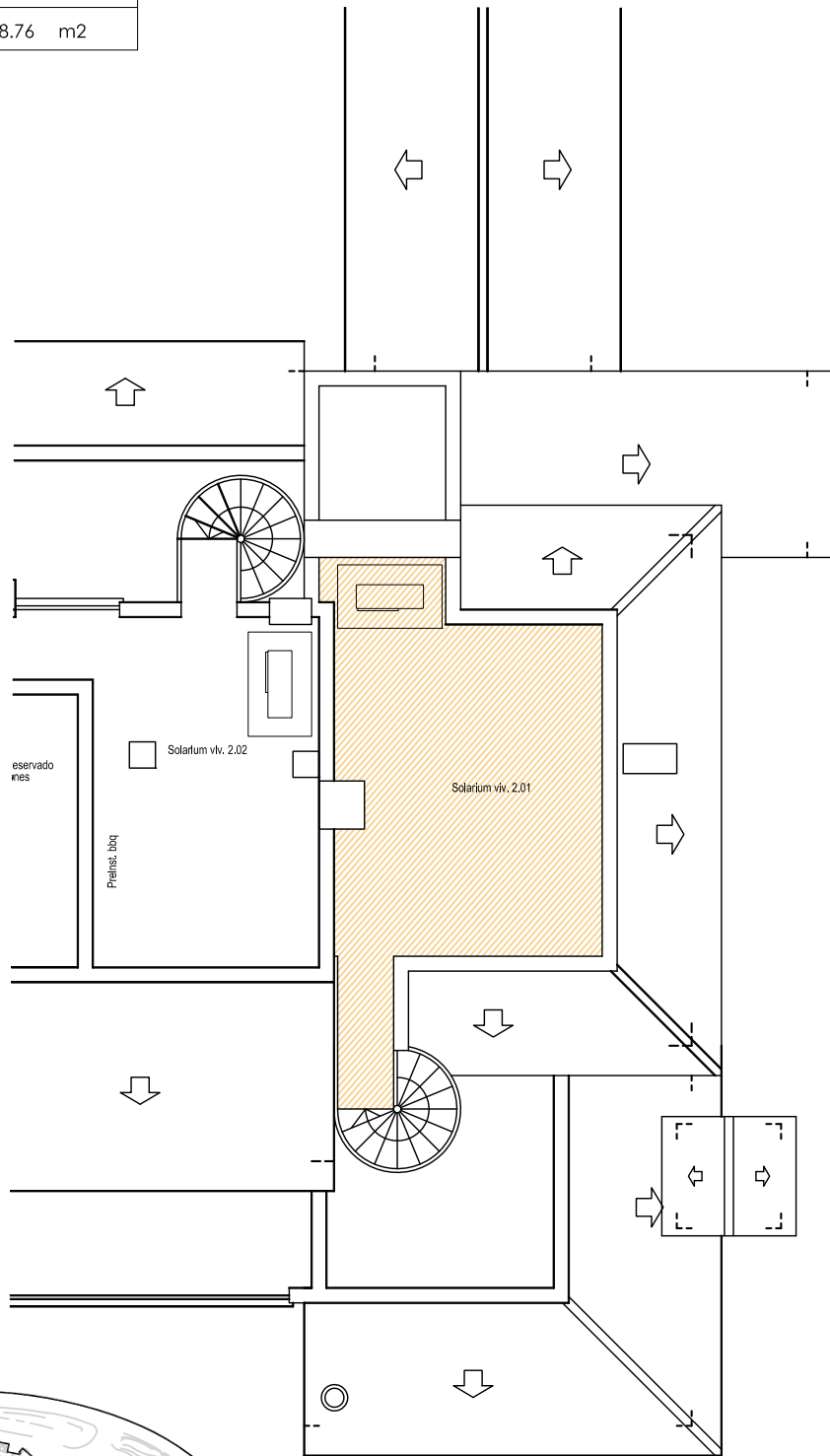
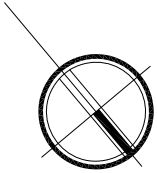
EDIFICIO 2 VIV. 2.01 P. PISO 1
 esc. 1/100

SUPERFICIES CONSTRUIDAS EDIFICIO 2	
VIVIENDA 2.01	
vivienda p.2	34.73 m2
terracea	11.24 m2



EDIFICIO 2 VIV. 2.01 P. PISO 2
 esc. 1/100

SUPERFICIES CONSTRUIDAS EDIFICIO 2	
VIVIENDA 2.01	
vivienda solarium	18.76 m2



EDIFICIO 2 VIV. 2.01 SOLARIUM
esc. 1/100