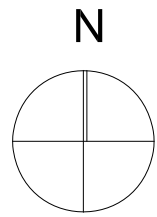


Norra Äppelrosvägen 13

Ritningar



FÖRKLARINGAR

Alla mått i millimeter.

AREOR

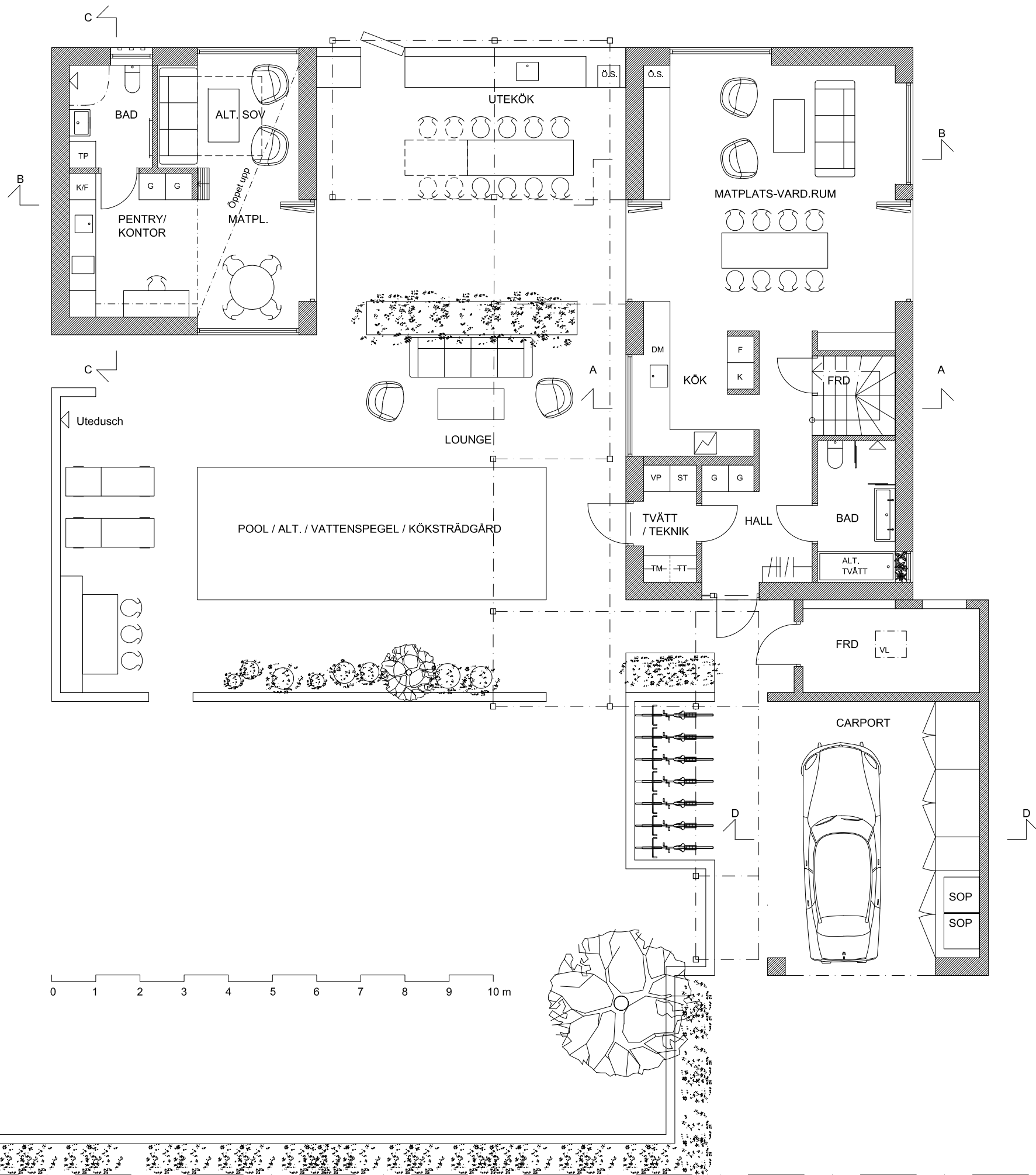
BYA HUVUDBYGGNAD	= 81,25 KVM
BYA CARPORT	= 42,5 KVM
BYA GÄSTHUS / STUDIO	= 39 KVM
BYA TOT.	= 162,75 KVM



SITUATIONSPLAN
SKALA 1:400

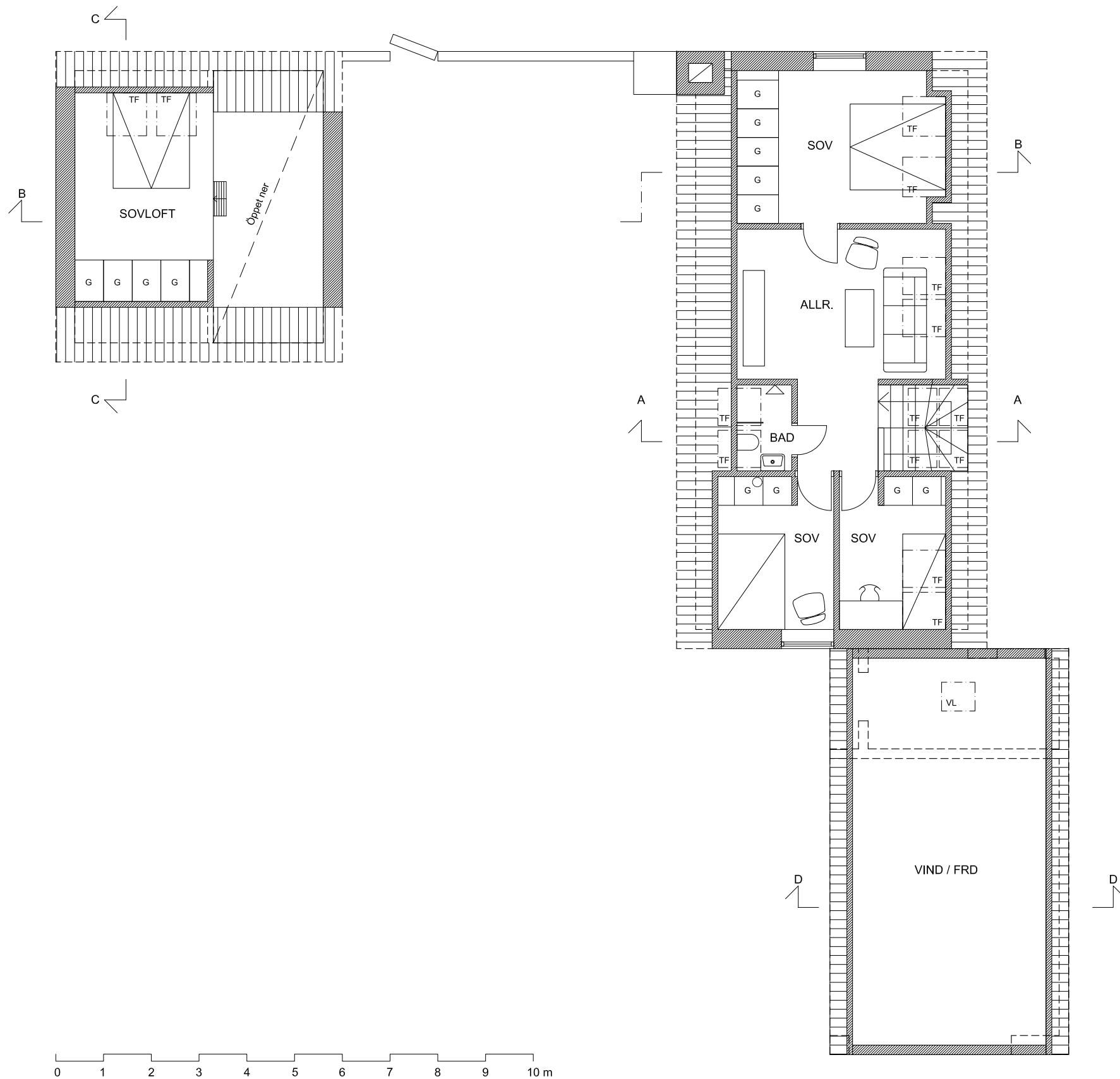
SITUATIONSPLAN

STRAND ARKITEKTUR



PLAN, BOTTENVÅNING

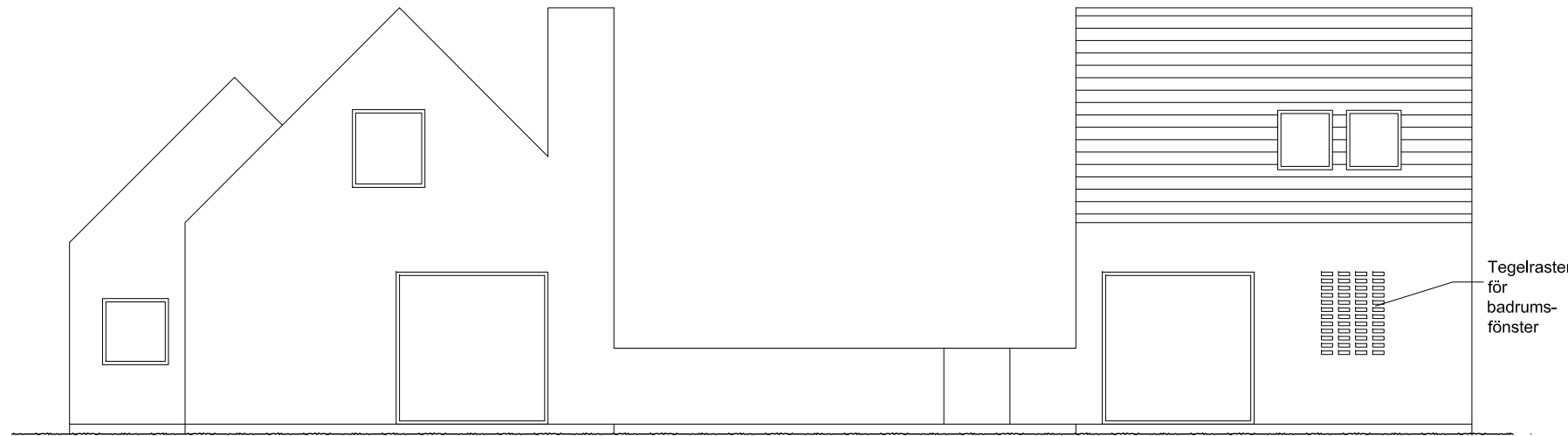
STRAND ARKITEKTUR



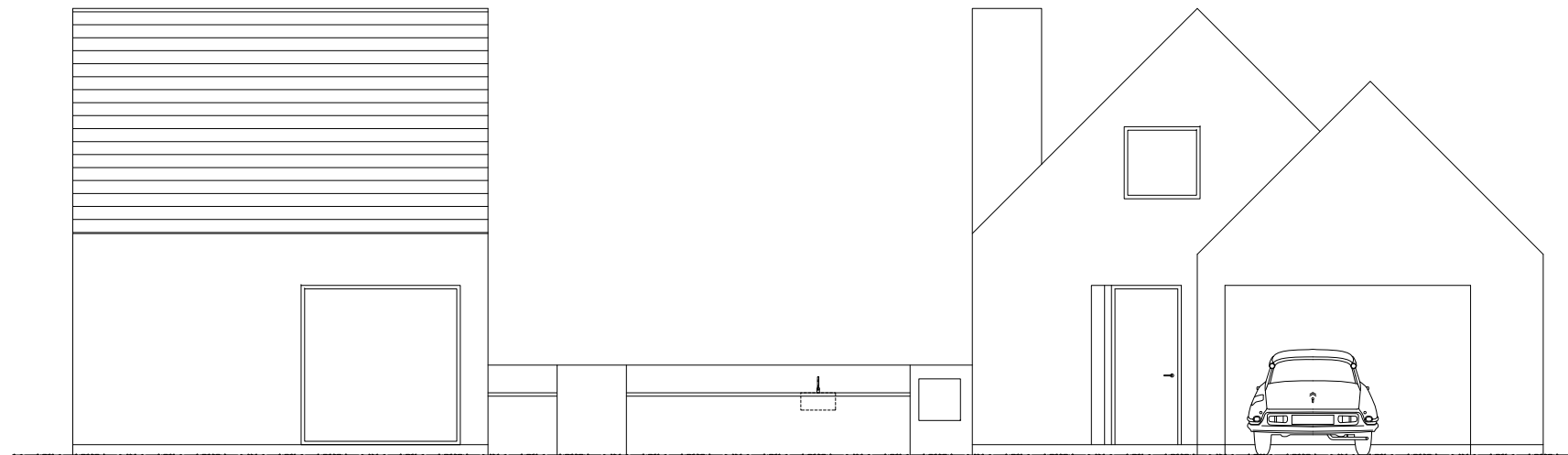
PLAN, OVANVÅNING

STRAND ARKITEKTUR

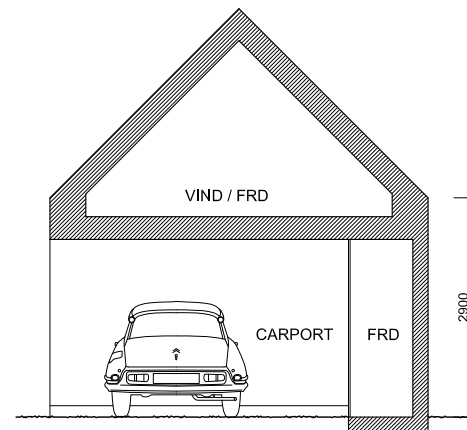
FÖRKLARINGAR
Alla mått i millimeter.



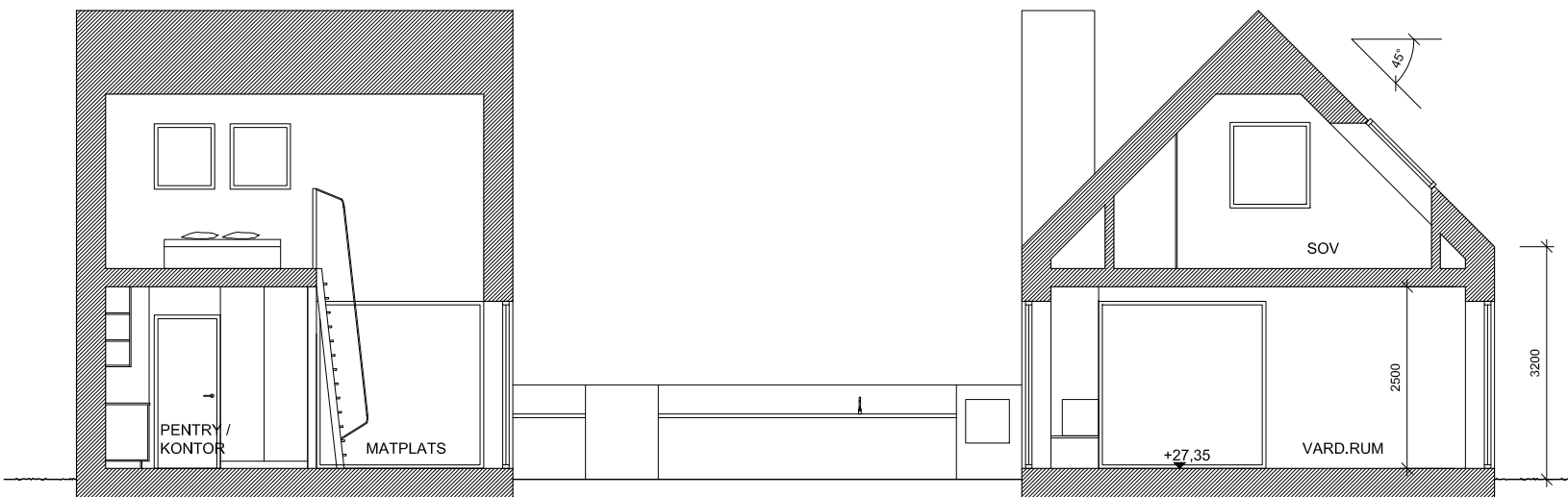
FASADER MOT NORR
SKALA 1:100



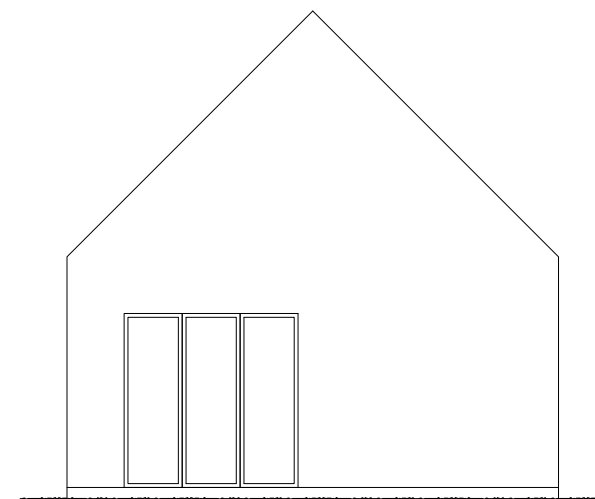
FASADER MOT SÖDER
SKALA 1:100



SEKTION D-D
SKALA 1:100

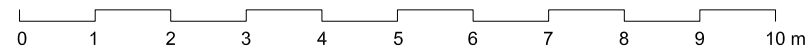


SEKTION B-B
SKALA 1:100



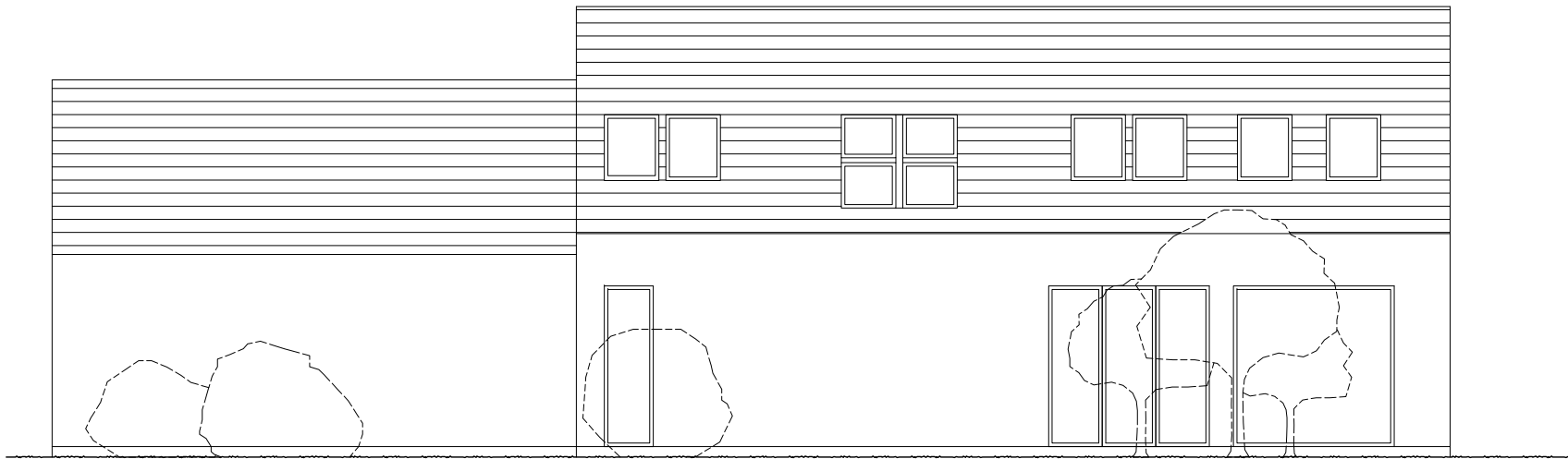
STUDIO, FASAD MOT ÖSTER
SKALA 1:100

FASADER, SEKTIONER

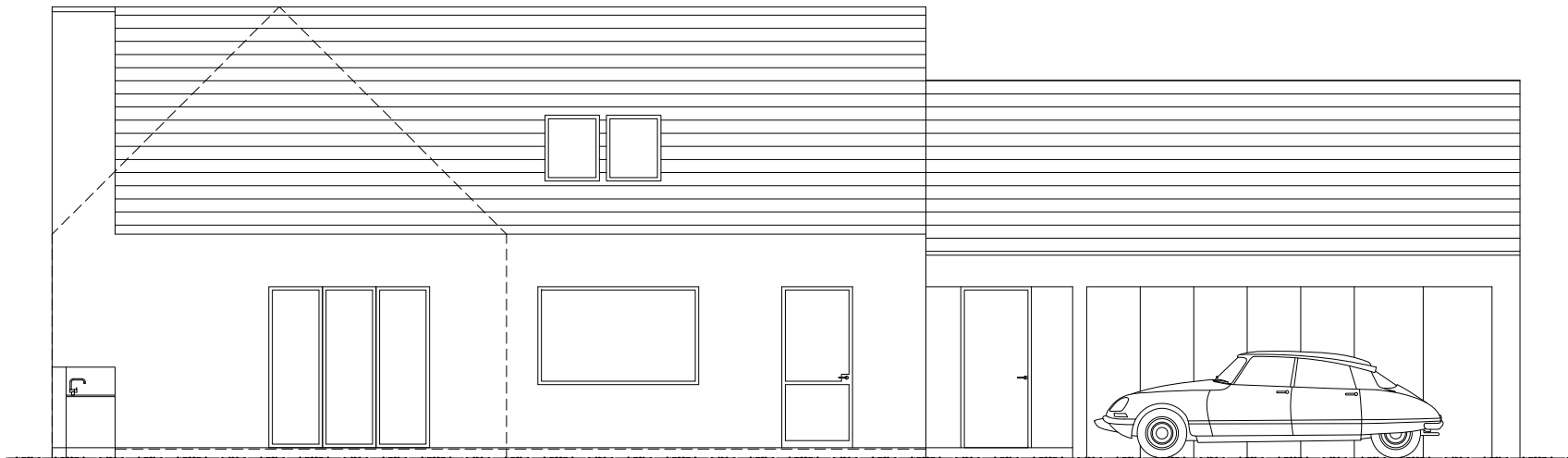


STRAND ARKITEKTUR

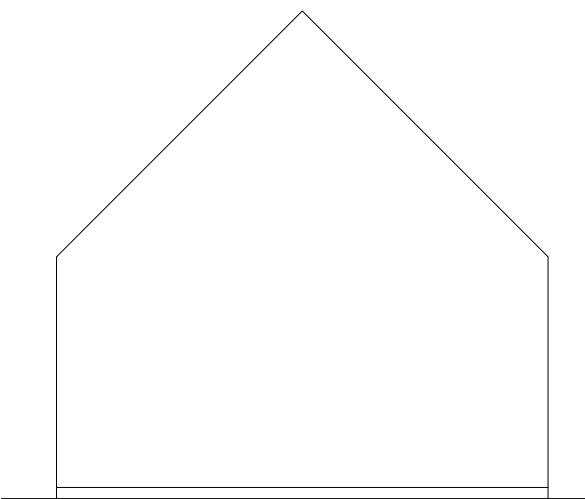
FÖRKLARINGAR
Alla mått i millimeter.



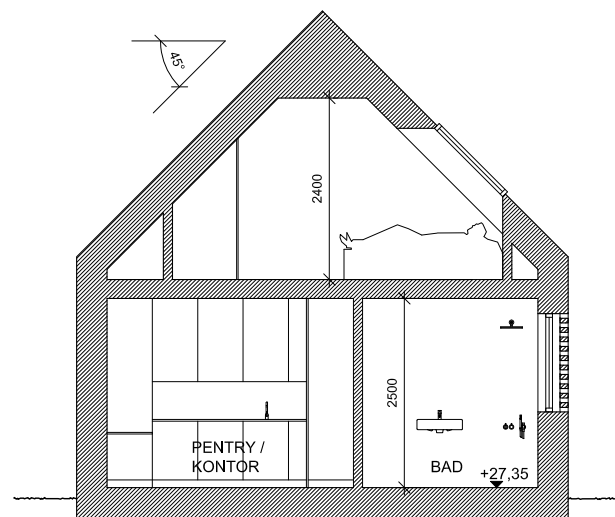
FASADER MOT ÖSTER
SKALA 1:100



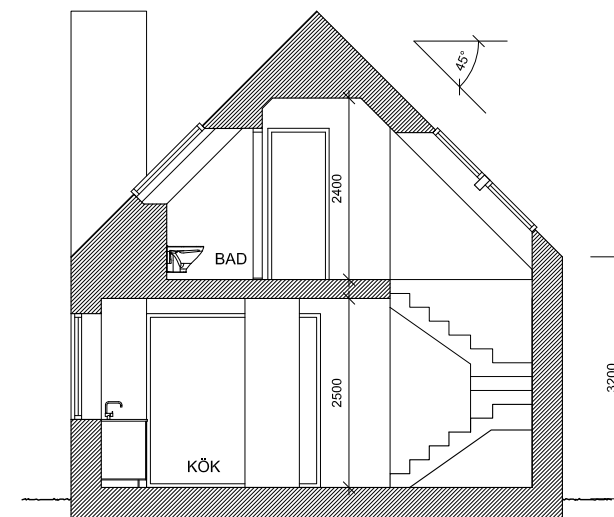
FASADER MOT VÄSTER
SKALA 1:100



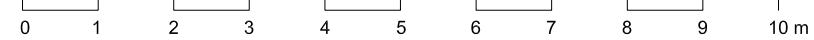
STUDIO, FASAD MOT VÄSTER
SKALA 1:100



STUDIO, SEKTION C-C
SKALA 1:100

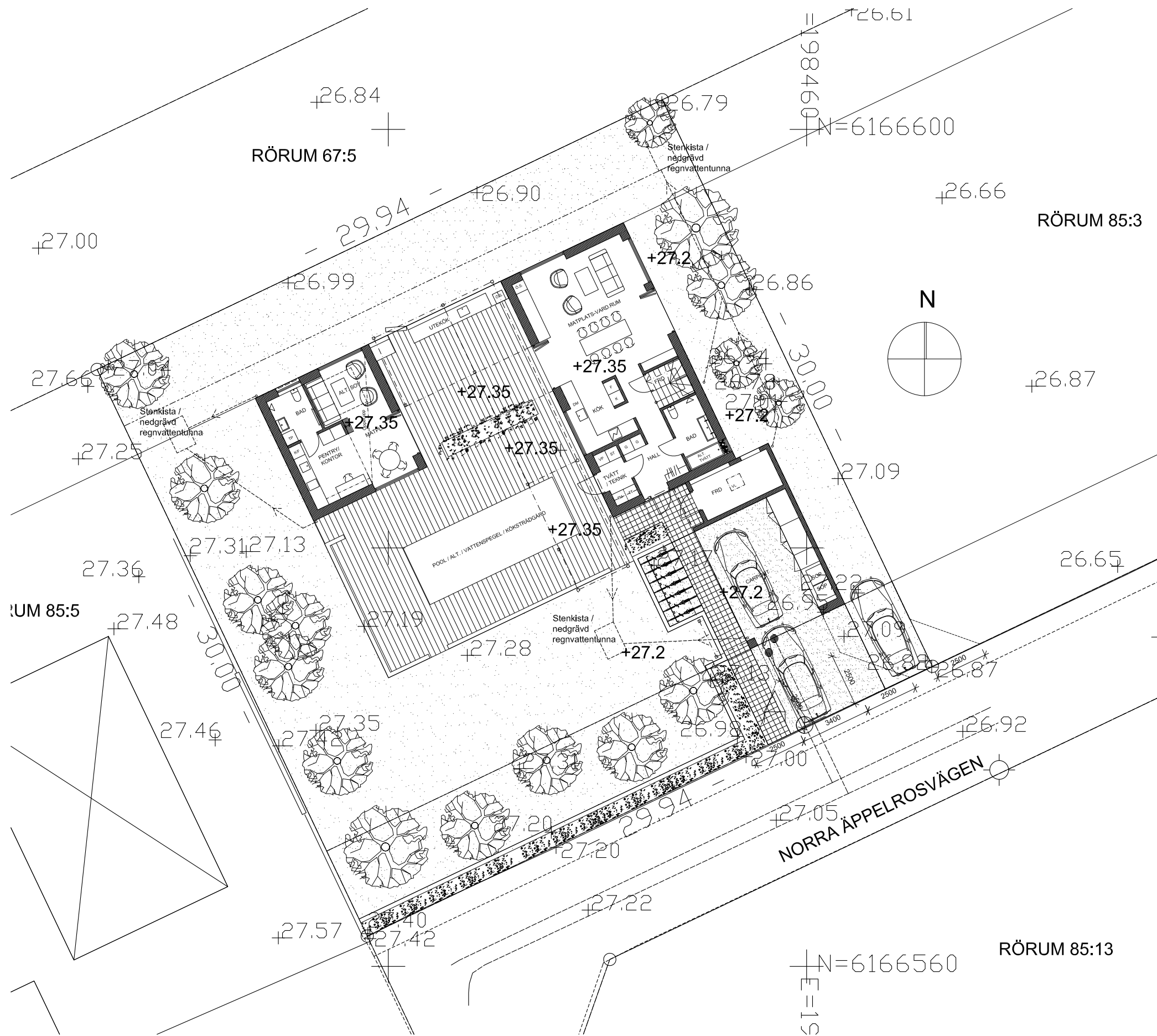


SEKTION A-A
SKALA 1:100



FASADER, SEKTIONER FORTS.

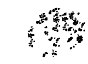

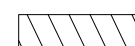

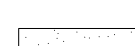
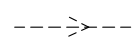
STRAND ARKITEKTUR



FÖRESKRIFTER

Alla mått i millimeter. Plushöjder undantagna.

FÖRKLARINGAR

-  Låg växtlighet, typ lavendel
-  Singel
-  Trädäck
-  Stenplattor
-  Gräs
- +27.2 Avser nya plushöjder
-  Dagvattenhantering

MARKPLANERING

STRAND ARKITEKTUR